



# Pippi AP R\_TS Lounge Armchair

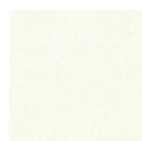
design Roberto Paoli, 2019

Lounge with a four-leg base completely upholstered in fabric. Steel feet.

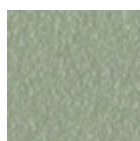
When the rhythms get slower, Pippi furnishes the lounge and waiting areas with a timeless spirit. Upholstered with fabric or imitation leather, with customizable padding and feet ... Its versatile and contemporary soul always finds the right space. Listen to [the story of the designer Roberto Paoli](https://www.midj.com/about/videos/roberto-paoli-tells-about-pippi-collection) - <https://www.midj.com/about/videos/roberto-paoli-tells-about-pippi-collection> on the Pippi collection.

## Colors and Materials

### Structure



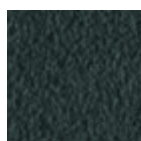
White steel



Sand steel



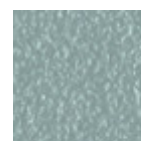
Pastel yellow steel



Grafite steel



Black steel



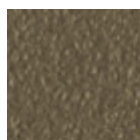
Light blue steel



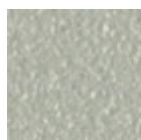
Ocean blue steel



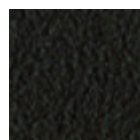
Bronze Steel



Fango steel



Light grey steel



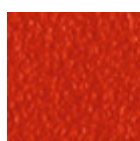
Brown steel



Ocher steel



Facepowder pink steel



Red steel



Sage green steel

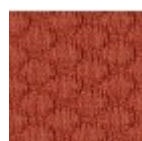


Pink Gold



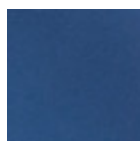
Black Nickel

### Coating



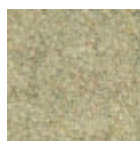
Visual fabric

11 Colors



Flexy faux leather

5 Colors



Fenix Wool fabric

13 Colors

## Dimensions



## Volumetric Details

**Weight** 10 Kg  
**Volume** 0.39 mc  
**Package** 1

	cm	inch
A	75	29.5
B	59	27.2
C	66	26
D	41	16.1
E	59	23.2

## Downloads

[.3ds Pippi AP R\\_TS \(zip\)](https://www.midj.com/images/uploads/resources/3ds-midj-pippi-ap.zip) - <https://www.midj.com/images/uploads/resources/3ds-midj-pippi-ap.zip>  
[.dae Pippi AP R\\_TS \(zip\)](https://www.midj.com/images/uploads/resources/3d-midj-pippi-ap-dae.zip) - <https://www.midj.com/images/uploads/resources/3d-midj-pippi-ap-dae.zip>  
[.dxf Pippi AP R\\_TS \(zip\)](https://www.midj.com/images/uploads/resources/3d-midj-pippi-ap-dxf.zip) - <https://www.midj.com/images/uploads/resources/3d-midj-pippi-ap-dxf.zip>  
[.obj Pippi AP R\\_TS \(zip\)](https://www.midj.com/images/uploads/resources/3d-midj-pippi-ap-obj.zip) - <https://www.midj.com/images/uploads/resources/3d-midj-pippi-ap-obj.zip>  
[.stl Pippi AP R\\_TS \(zip\)](https://www.midj.com/images/uploads/resources/3d-midj-pippi-ap-stl.zip) - <https://www.midj.com/images/uploads/resources/3d-midj-pippi-ap-stl.zip>

## Materials Certifications

### Flexy faux leather

MARTINDALE: 10.000 cycles

COMPOSITION  
50% PU, 40% PA, 10% EA

FIRE RESISTANCE  
BS 5852-1 source 0

#### CLEANING RULES

Brush regularly with a soft bristle brush. You can dab any stains with a damp cloth soaked in a solution of water and neutral soap or with a water and 20% alcohol solution. Rinse with a clean damp cloth and dry with a dry cloth.

#### GENERAL WARNINGS

Lack of quick action makes the cleaning less effective, leaving consequently some permanent haloes. To avoid permanent stains, the lighter colours of the article should not be brought into contact with textiles and clothing coloured with unfixed dyes. We cannot guarantee the ability to remove unknown dyes from light coloured product.

Slight color differences between a lot and the other are to be considered normal.

## Materials Certifications

### Fenix Wool fabric

Martindale: 100.000 cycles  
Composition: 75% wool; 25% Polyamide

FIRE RESISTANCE  
CLASSE 1 IM,  
EN 1021 Part 1-2,  
Calif. Bull. 117

#### PROPRIETIES AND ADVANTAGES

The particular finish of the Fenix Wool fabric is obtained by a stabilization treatment which gives a particularly soft hand but very consistent, able to achieve excellent values of resistance to pilling and abrasion. This fabric is made from regenerated wool. The recycling allows the creation of fabrics even more varied and rich in composition with inimitable content of fantasy. The very contemporary color palette is coordinated harmoniously both for domestic and for the office sector. The fabric is produced

entirely in Italy.

#### CLEANING INSTRUCTIONS

We recommend to use a regular vacuum cleaner with plain tip, do not brush. Dry cleaning is recommended. Some colorants used for garments or accessories (i.e. jeans) may stain pale colours of this product. This tendency increases in a damp, warm environment.