

MIDJ
INITALY



Nuvola AP R_CU Lounge Armchair

design Midj R&D

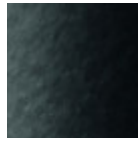
Nuvola ATB lounge with four legs in lacquered steel or completely upholstered with hide and regenerated hide. Possibility to upholster the back face with a different fabric, leather or ecoleather.

Colors and Materials

Structure



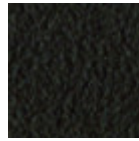
White steel



Black steel



Sand steel



Brown steel



Grafite steel

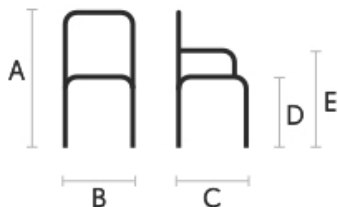
Coating



Hide

20 Colors

Dimensions



	cm	inch
A	77	30.3
B	71	28
C	64	25.2
D	42	16.5
E	58	22.8

Volumetric Details

Weight 14.5 Kg

Volume 0.44 mc

Package 1

Materials Certifications

Hide

FIRE RESISTANCE:

Technical Bulletin 117/00 sez E part. 1

EN 1021 parte 1/94, parte 2/94

BS 5852/90

PROPRIETIES AND ADVANTAGES

The hide is a hygienic and very practical product: it resists to wear, it's impermeable to water but, at the same time, the hide wicks air and sweat. The hide is obtained from the skin of bovines breeds and slaughtered for food purposes and subsequently treated with chromium salts.

CLEANING INSTRUCTIONS

Use only a damp, non abrasive cloth; do not use products containing solvents or alcohol that may damage the surface. It is advisable to test an invisible area of the product before cleaning it all. For good preservation of the product purchased, it is unadvisable to expose it to direct sunlight that may alter its features and colours. Any surface imperfections are natural features of hide and guarantee that it is an original product.

MIDJ
INITALY



Nuvola AT M CU Lounge Chair

design Midj R&D

Nuvola ATS lounge with four legs in lacquered steel or completely upholstered with hide and regenerated hide. Possibility to upholster the back face with a different fabric, leather or ecoleather.

Colors and Materials

Structure



White steel



Black steel



Sand steel



Brown steel



Grafite steel

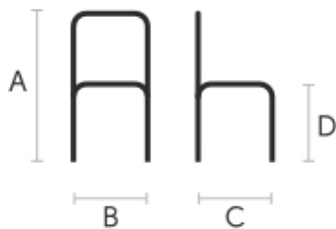
Coating



Hide

20 Colors

Dimensions



	cm	inch
A	77	30.3
B	71	28
C	64	25.2
D	42	16.5

Volumetric Details

Weight 11 Kg

Volume 0.36 mc

Package 1

Materials Certifications

Hide

FIRE RESISTANCE:

Technical Bulletin 117/00 sez E part. 1

EN 1021 parte 1/94, parte 2/94

BS 5852/90

PROPRIETIES AND ADVANTAGES

The hide is a hygienic and very practical product: it resists to wear, it's impermeable to water but, at the same time, the hide wicks air and sweat. The hide is obtained from the skin of bovines breeds and slaughtered for food purposes and subsequently treated with chromium salts.

CLEANING INSTRUCTIONS

Use only a damp, non abrasive cloth; do not use products containing solvents or alcohol that may damage the surface. It is advisable to test an invisible area of the product before cleaning it all. For good preservation of the product purchased, it is unadvisable to expose it to direct sunlight that may alter its features and colours. Any surface imperfections are natural features of hide and guarantee that it is an original product.