

Zeus LG Table

Fixed table with wooden structure.

Top available in cristalceramic with size 200x100 cm (78,7x39,4 in) and 250x100 cm (98,4x39,4 in), in wood with size 200x106 cm (78,7x41,7 in) and 250x106 cm (98,4x41,7 in), in glass with size 200x106 cm (78,7x41,7 in) and 250x106 cm (98,4x41,7 in).



Colors and Materials

Structure



Veneered flamed walnut

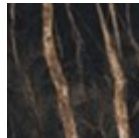
Coating



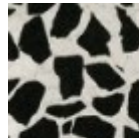
Crystalceramic with effect calacatta marble



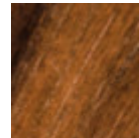
Crystalceramic glossy black greek marble



Crystalceramic with effect noir desir marble



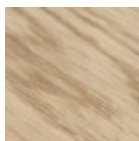
Venetian crystalceramic



Veneered flamed walnut



Solid walnut bark edge



Solid oak straight edge

Dimensions



	A (cm)	B (cm)	C (cm)
	(inch)	(inch)	(inch)
200x100	76	200	100
(cm)	29.9	78.7	39.4
(inch)			

	A (cm)	B (cm)	C (cm)
	(inch)	(inch)	(inch)
200x106			
(cm)	76	200	106
(inch)	29.9	78.7	41.7
250x100			
(cm)	76	250	100
(inch)	29.9	98.4	39.4
250x106			
(cm)	76	250	106
(inch)	29.9	98.4	41.7

Volumetric Details

Weight 116 Kg

Volume 0.37 mc

Package 5

Materials Certifications

Solid oak straight edge

FEATURES AND PLUS

Solid wood tops are obtained from the trunk of the tree, in particular from the heartwood, or the inner part (the less young one). Each top has unique characteristics in terms of veins and knots due to the natural origin of the material. To reach the widths necessary for the realization of a top for domestic use, several floorboards/strips are joined together in an effort to maintain the greater possible uniformity.

MAINTENANCE

For the regular cleaning schedule of Solid woos tops, use a wet sponge with mild soap diluted in water or specific products. Dry after each application with a cloth or absorbent paper. Do not use abrasive products. In case of accidental release of liquid substances, dab immediately the surface with absorbent paper or a dry, clean cloth. Avoid proximity to heat sources. Expose the solid wood surfaces to light, for example by opening periodically the extensions of the tables that are placed inside the structures, or by moving any objects such as vases and accessories generally resting on the top.

Zeus MT Table

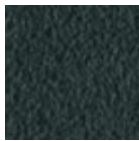
Fixed table with structure in laquered steel.



Top available in cristalceramic with size 200x100 cm (78,7x39,4 in) and 250x100 cm (98,4x39,4 in), in wood with size 200x106 cm (78,7x41,7 in) and 250x106 cm (98,4x41,7 in), in glass with size 200x106 cm (78,7x41,7 in) and 250x106 cm (98,4x41,7 in).

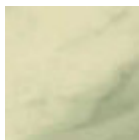
Colors and Materials

Structure

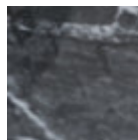


Grafite steel

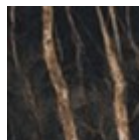
Coating



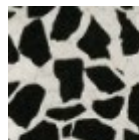
Crystalceramic with effect calacatta marble



Crystalceramic glossy black greek marble



Crystalceramic with effect noir desir marble



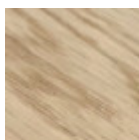
Venetian crystalceramic



Extraclear transparent glass



Veneered flamed walnut



Solid oak straight edge



Solid walnut bark edge

Dimensions



Volumetric Details

Weight 153 Kg

Volume 0.44 mc

Package 5

	A (cm) (inch)	B (cm) (inch)	C (cm) (inch)
200x100 (cm) (inch)	76 29.9	200 78.7	100 39.4
200x106 (cm) (inch)	76 29.9	200 78.7	106 41.7
250x100 (cm) (inch)	76 29.9	250 98.4	100 39.4
250x106 (cm) (inch)	76 29.9	250 98.4	106 41.7

Materials Certifications

Solid oak straight edge

FEATURES AND PLUS

Solid wood tops are obtained from the trunk of the tree, in particular from the heartwood, or the inner part (the less young one). Each top has unique characteristics in terms of veins and knots due to the natural origin of the material. To reach the widths necessary for the realization of a top for domestic use, several floorboards/strips are joined together in an effort to maintain the greater possible uniformity.

MAINTENANCE

For the regular cleaning schedule of Solid woos tops, use a wet sponge with mild soap diluted in water or specific products. Dry after each application with a cloth or absorbent paper. Do not use abrasive products. In case of accidental release of liquid substances, dab immediately the surface with absorbent paper or a dry, clean cloth. Avoid proximity to heat sources. Expose the solid wood surfaces to light, for example by opening periodically the extensions of the tables that are placed inside the structures, or by moving any objects such as vases and accessories generally resting on the top.