

Moonlight Table

design Franco Poli

Moonlight fixed table with frame in Baydur® and crystal or cristalceramic top.



Colors and Materials

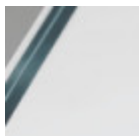
Structure



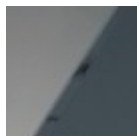
Baydur

3 Colors

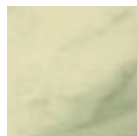
Coating



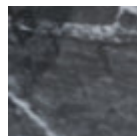
Extraclear transparent glass



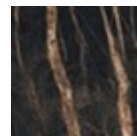
Glossy fumè glass



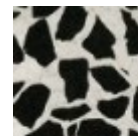
Crystalceramic with effect calacatta marble



Crystalceramic glossy black greek marble



Crystalceramic with effect noir desir marble



Venetian crystalceramic

Dimensions



	A (cm) (inch)	B (cm) (inch)	C (cm) (inch)
200 x 100 (cm) (inch)	76 29.9	200 78.7	100 39.4

	A (cm)	B (cm)	C (cm)
	(inch)	(inch)	(inch)
220 x 116			
(cm)	76	220	116
(inch)	29.9	86.6	45.7

Volumetric Details

Weight 105 Kg

Volume 0.6 mc

Package 2
