

MIDJ INITALY

Lea Table

design Paolo Vernier, 2019

Lea fixed table with four legs base. Barrel top in ceramic or wood.

Italian elegance and conviviality are enclosed in the finely refined shape of the Lea table. The thin lines, the contemporary appeal and the attention to every detail tell of a timeless design, to furnish timeless spaces in a mix of aesthetics and functionality.



Colors and Materials

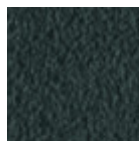
Structure



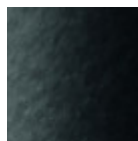
White steel



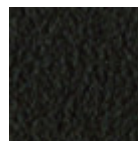
Sand steel



Grafite steel



Black steel



Brown steel

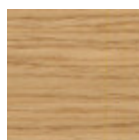
Coating



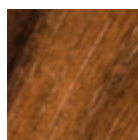
Black lacquered
veneered wood



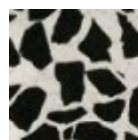
White lacquered
veneered wood



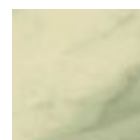
Veneered wood
natural oak finish



Veneered flamed
walnut

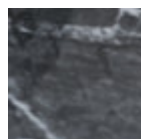


Venetian glossy
ceramic

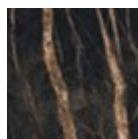


Ceramic with effect
calacatta marble

1 color

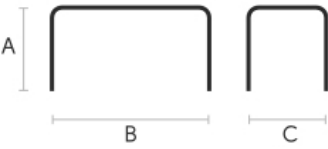


Black greek glossy
marble ceramic



Noir desir glossy
ceramic marble

Dimensions



Volumetric Details

Weight 100 Kg

Volume 0.35 mc

Package 2

	A (cm) (inch)	B (cm) (inch)	C (cm) (inch)
190x115 (cm) (inch)	75 29.5	190 74.8	115 45.3
220x12 (cm) (inch)	75 29.5	220 86.6	120 47.2