

Paul botte Extendable Table

Extendable table with steel base. Wooden or crystalceramic top, matching extensions.

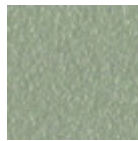


Colors and Materials

Structure



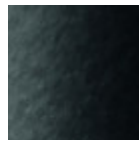
White steel



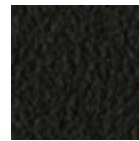
Sand steel



Grafite steel

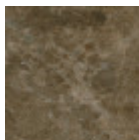


Black steel

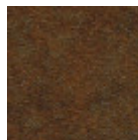


Brown steel

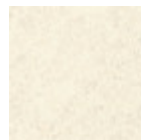
Coating



Emperador marble crystalceramic



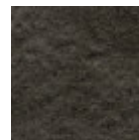
Corten crystalceramic



Oxide white crystalceramic



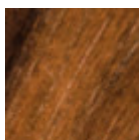
Lead crystalceramic



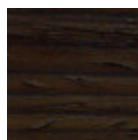
Charcoal savoia crystalceramic



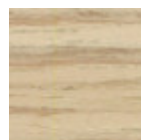
Cement savoia crystalceramic



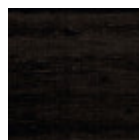
Veneered flamed walnut



Veneered wood dark oak



Veneered wood natural finish

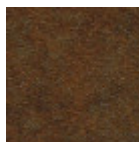


Black lacquered veneered wood

Extensions



**Emperador marble
crystalceramic**



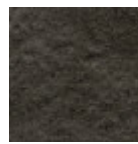
**Corten
crystalceramic**



**Oxide white
crystalceramic**



Lead crystalceramic



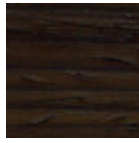
**Charcoal savoia
crystalceramic**



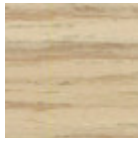
**Cement savoia
crystalceramic**



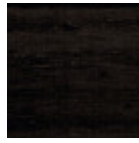
**Veneered flamed
walnut**



**Veneered wood dark
oak**

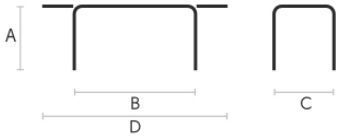


**Veneered wood
natural finish**



**Black lacquered
veneered wood**

Dimensions



	cm	inch
A	75	29.5
B	120	47.2
C	120	47.2
D	180	70.9

Volumetric Details

Weight 51 Kg

Volume 0.75 mc

Package 3



Paul Ø120 Extendable Table

Extendable table with steel base. Wooden or crystalceramic top, matching extensions.

Colors and Materials

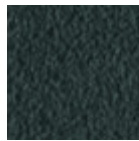
Structure



White steel



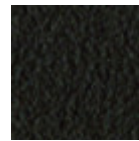
Sand steel



Grafite steel

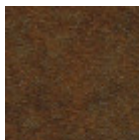


Black steel

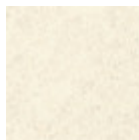


Brown steel

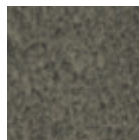
Coating



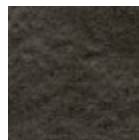
Corten crystalceramic



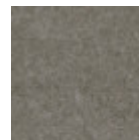
Oxide white crystalceramic



Lead crystalceramic



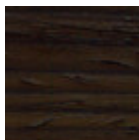
Charcoal savoia crystalceramic



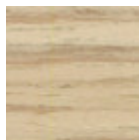
Cement savoia crystalceramic



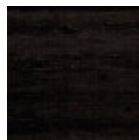
Veneered flamed walnut



Veneered wood dark oak



Veneered wood natural finish

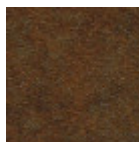


Black lacquered veneered wood

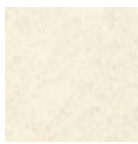
Extensions



**Emperador marble
crystalceramic**



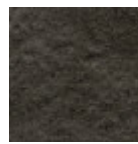
**Corten
crystalceramic**



**Oxide white
crystalceramic**



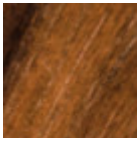
Lead crystalceramic



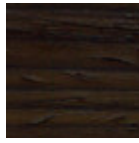
**Charcoal savoia
crystalceramic**



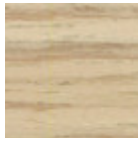
**Cement savoia
crystalceramic**



**Veneered flamed
walnut**



**Veneered wood dark
oak**

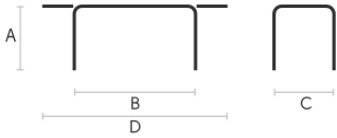


**Veneered wood
natural finish**



**Black lacquered
veneered wood**

Dimensions



	cm	inch
A	75	29.5
B	120	47.2
C	120	47.2
D	180	70.9

Volumetric Details

Weight 51 Kg
Volume 0.75 mc
Package 3