



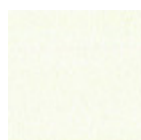
More Extendable Table

Extendable table with four legs base in lacquered steel. Top available in melamine, lacquered wood, Fenix, crystal or crystalceramic.

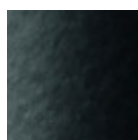
For the 140x90 versions available top in veneered lacquered finish flamed walnut.

Colors and Materials

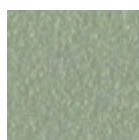
Structure



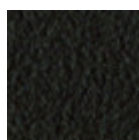
White steel



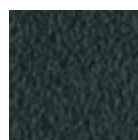
Black steel



Sand steel

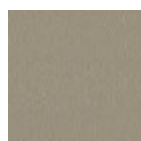


Brown steel

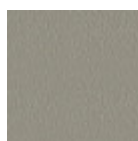


Grafite steel

Coating



Melamine
8 Colors



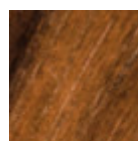
Laquered MDF
5 Colors



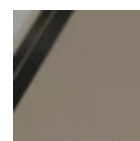
White fenix



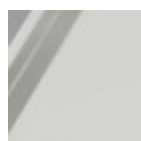
Black fenix



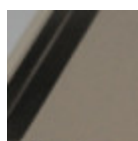
Veneered flamed
walnut



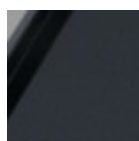
Glossy sand glass



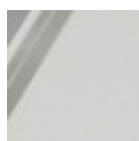
Extraclear glossy
white glass



Matt sand
antiscratch glass



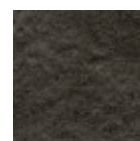
Matt graphite
antiscratch glass



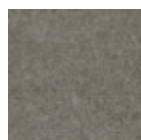
Extra clear matt
white antiscratch
glass



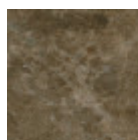
Lead crystalceramic



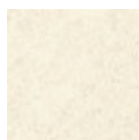
Charcoal savoia
crystalceramic



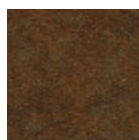
Cement savoia
crystalceramic



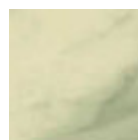
Emperador marble
crystalceramic



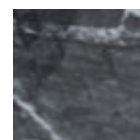
Oxide white
crystalceramic



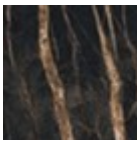
Corten
crystalceramic



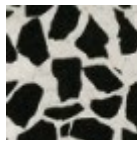
Crystalceramic with
effect calacatta
marble



Crystalceramic
glossy black greek
marble



Crystalceramic with effect noir desir marble



Venetian crystalceramic

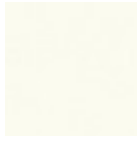
Extensions



Melamine
8 Colors



Laquered MDF
5 Colors



White fenix

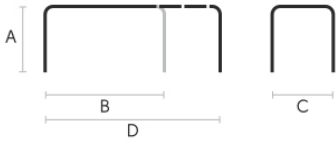


Black fenix



Veneered flamed walnut

Dimensions



Volumetric Details

Weight 82 Kg
Volume 0.4 mc
Package 6

	A (cm) (inch)	B (cm) (inch)	C (cm) (inch)	D (cm) (inch)
100/140x70 (cm) (inch)	75 29.5	100 39.4	70 27.6	140 55.1
120/170x80 (cm) (inch)	75 29.5	120 47.2	80 31.5	170 66.9
140/200x90 (cm) (inch)	75 29.5	140 55.1	90 35.4	200 78.7
L				
140/230x90 (cm) (inch)	75 29.5	140 55.1	90 35.4	230 90.6
XL				
110/245x80 (cm) (inch)	75 29.5	110 43.3	80 31.5	245 96.5
XL				
140/290x90 (cm) (inch)	75 29.5	140 55.1	90 35.4	290 114.2