



## Master Extendable Table

design Paolo Vernier, 2017



Extendable table with steel frame. Top available in different sizes and finishes.

Also available fixed version in size 190x100 cm.

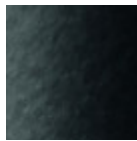
---

### Colors and Materials

#### Structure

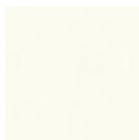


White steel



Black steel

#### Coating

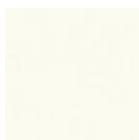


White fenix



Black fenix

#### Extensions



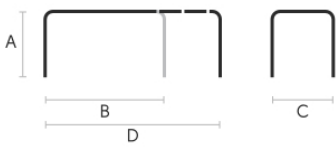
White fenix



Black fenix

---

### Dimensions



## Volumetric Details

**Weight** 64.5 Kg

**Volume** 0.51 mc

**Package** 4

	<b>A</b>	<b>B</b>	<b>C</b>	<b>D</b>
	<b>(cm)</b>	<b>(cm)</b>	<b>(cm)</b>	<b>(cm)</b>
	(inch)	(inch)	(inch)	(inch)
<b>190x100</b>	76	190	100	
<b>(cm)</b>	29.9	74.8	39.4	
(inch)				
<b>140/190x90</b>	76	140	90	190
<b>(cm)</b>	29.9	55.1	35.4	74.8
(inch)				
<b>160/210x90</b>	76	160	90	210
<b>(cm)</b>	29.9	63	35.4	82.7
(inch)				