



# Forest Extendable Table

design Beatriz Sempere, 2017

Extendable table with lacquered steel base. Glass or crystalceramic top.



## Colors and Materials

### Structure



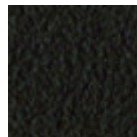
Metallo bianco



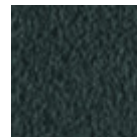
Metallo nero



Sand steel

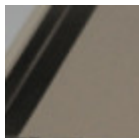


Brown steel

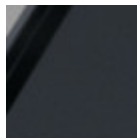


Grafite steel

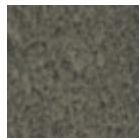
### Coating



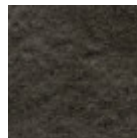
Matt sand antiscratch glass



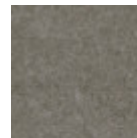
Matt graphite antiscratch glass



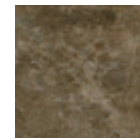
Lead crystalceramic



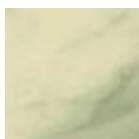
Charcoal savoia crystalceramic



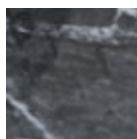
Cement savoia crystalceramic



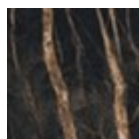
Emperador marble crystalceramic



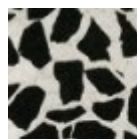
Crystalceramic with effect calacatta marble



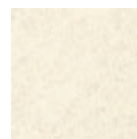
Crystalceramic glossy black greek marble



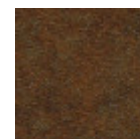
Crystalceramic with effect noir desir marble



Venetian crystalceramic

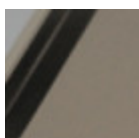


Oxide white crystalceramic

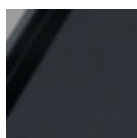


Corten crystalceramic

### Extensions



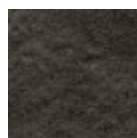
Matt sand antiscratch glass



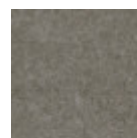
Matt graphite antiscratch glass



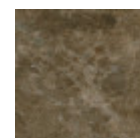
Lead crystalceramic



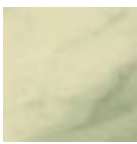
Charcoal savoia crystalceramic



Cement savoia crystalceramic



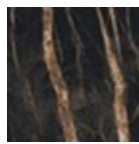
Emperador marble crystalceramic



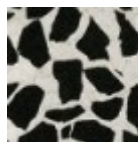
Crystalceramic with effect calacatta marble



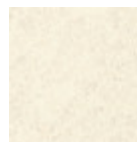
Crystalceramic glossy black greek marble



Crystalceramic with effect noir desir marble



Venetian crystalceramic

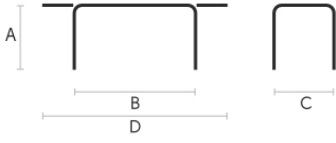


Oxide white crystalceramic



Corten crystalceramic

## Dimensions



	cm	inch
A	75	29.5
B	200	78.7
C	100	39.4
D	300	118.1

## Volumetric Details

**Weight** 200 Kg

**Volume** 1.63 mc

**Package** 4