



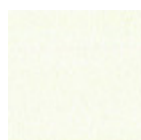
Blade Extendable Table

Extendable table with lacquered steel frame and legs covered in wood.
Top available in melamine, lacquered wood, Fenix, crystal or crystalceramic.

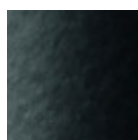
For the 140x90 versions available top in veneered lacquered finish flamed walnut.

Colors and Materials

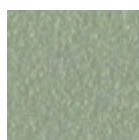
Structure



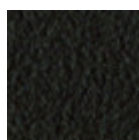
White steel



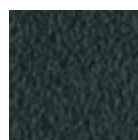
Black steel



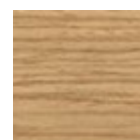
Sand steel



Brown steel



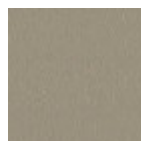
Grafite steel



Lacquered ash

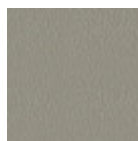
9 Colors

Coating



Melamine

8 Colors



Laquered MDF

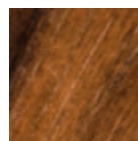
5 Colors



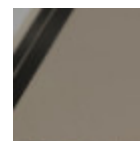
White fenix



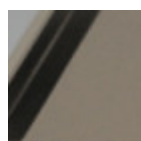
Black fenix



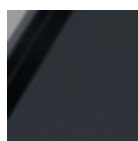
Veneered flamed walnut



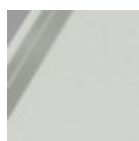
Glossy sand glass



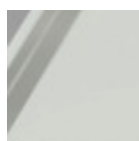
Matt sand antiscratch glass



Matt graphite antiscratch glass



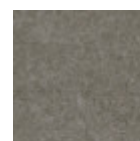
Extra clear matt white antiscratch glass



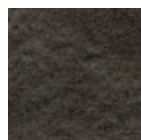
Extraclear glossy white glass



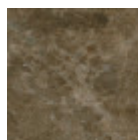
Lead crystalceramic



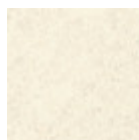
Cement savoia crystalceramic



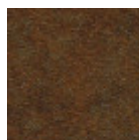
Charcoal savoia crystalceramic



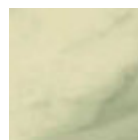
Emperador marble crystalceramic



Oxide white crystalceramic



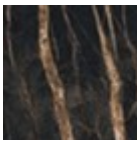
Corten crystalceramic



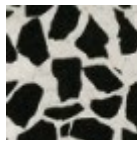
Crystalceramic with effect calacatta marble



Crystalceramic glossy black greek marble



Crystalceramic with effect noir desir marble



Venetian crystalceramic

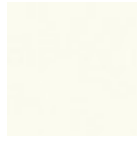
Extensions



Melamine
8 Colors



Laquered MDF
5 Colors



White fenix

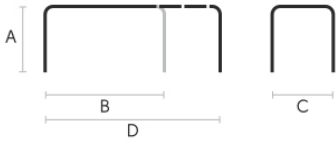


Black fenix



Veneered flamed walnut

Dimensions



A	B	C	D
(cm)	(cm)	(cm)	(cm)
(inch)	(inch)	(inch)	(inch)

120/170x80	A	B	C	D
(cm)	(cm)	(cm)	(cm)	(cm)
(inch)	(inch)	(inch)	(inch)	(inch)
	75	120	80	170
	29.5	47.2	31.5	66.9

140/200x90	A	B	C	D
(cm)	(cm)	(cm)	(cm)	(cm)
(inch)	(inch)	(inch)	(inch)	(inch)
	75	140	90	200
	29.5	55.1	35.4	78.7

L	A	B	C	D
(cm)	(cm)	(cm)	(cm)	(cm)
(inch)	(inch)	(inch)	(inch)	(inch)
140/230x90	75	140	90	230
	29.5	55.1	35.4	90.6

XL	A	B	C	D
(cm)	(cm)	(cm)	(cm)	(cm)
(inch)	(inch)	(inch)	(inch)	(inch)
110/245x80	75	110	80	245
	29.5	43.3	31.5	96.5

XL	A	B	C	D
(cm)	(cm)	(cm)	(cm)	(cm)
(inch)	(inch)	(inch)	(inch)	(inch)
140/290x90	75	140	90	290
	29.5	55.1	35.4	114.2

XL	A	B	C	D
(cm)	(cm)	(cm)	(cm)	(cm)
(inch)	(inch)	(inch)	(inch)	(inch)
160/310x90	75	160	90	310
	29.5	63	35.4	122

Volumetric Details

Weight 86 Kg
Volume 0.52 mc
Package 6