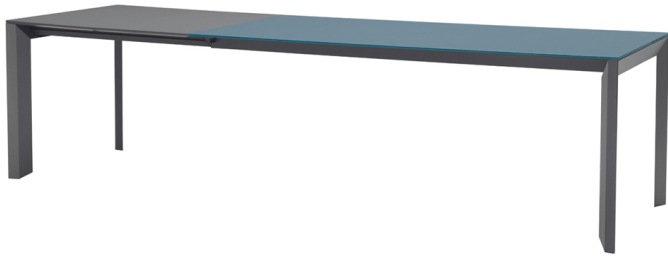




Apollo Extendable Table

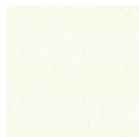
design Midj R&D, 2014

Extendable table with sliding base in painted steel. Top in melamine, wood, glass or ceramic.



Colors and Materials

Structure



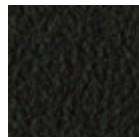
White steel



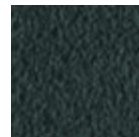
Black steel



Sand steel



Brown steel

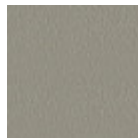


Grafite steel

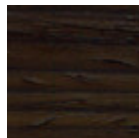
Coating



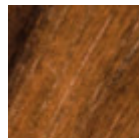
Melamine
8 Colors



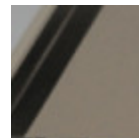
Laquered MDF
5 Colors



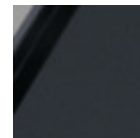
Veneered wood dark oak



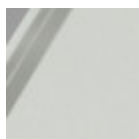
Veneered flamed walnut



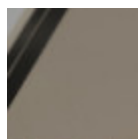
Matt sand antiscratch glass



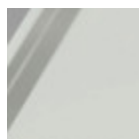
Matt graphite antiscratch glass



Extra clear matt white antiscratch glass



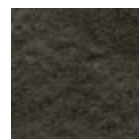
Glossy sand glass



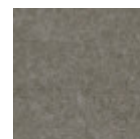
Extraclear glossy white glass



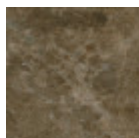
Lead crystalceramic



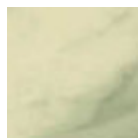
Charcoal savoia crystalceramic



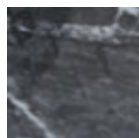
Cement savoia crystalceramic



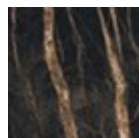
Emperador marble crystalceramic



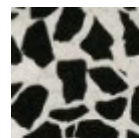
Crystalceramic with effect calacatta marble



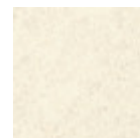
Crystalceramic glossy black greek marble



Crystalceramic with effect noir desir marble



Venetian crystalceramic



Oxide white crystalceramic



**Corten
crystalceramic**

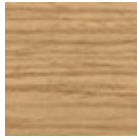
Extensions



Melamine
8 Colors

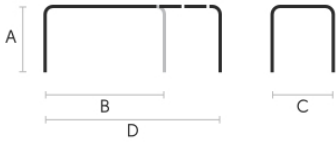


Laquered MDF
5 Colors



**Lacquered veneered
wood**
9 Colors

Dimensions



Volumetric Details

Weight 107 Kg
Volume 0.4 mc
Package 4

	A (cm) (inch)	B (cm) (inch)	C (cm) (inch)	D (cm) (inch)
140/190x90 (cm) (inch)	75 29.5	140 55.1	90 35.4	190 74.8
160/210/260x90 (cm) (inch)	75 29.5	160 63	90 35.4	260 102.4
190/240/290x90 (cm) (inch)	75 29.5	190 74.8	90 35.4	290 114.2