



Alfred Extendable Table

design Midj R&D, 2017



Extendable table with sled base in lacquered steel. Top in crystalceramic or antiscratch glass.

Colors and Materials

Structure



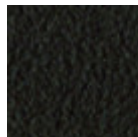
White steel



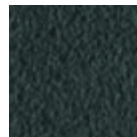
Black steel



Sand steel

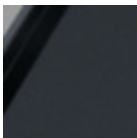


Brown steel

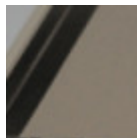


Grafite steel

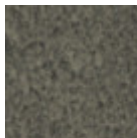
Coating



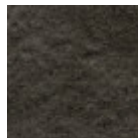
Matt graphite antiscratch glass



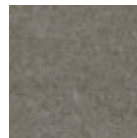
Matt sand antiscratch glass



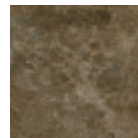
Lead crystalceramic



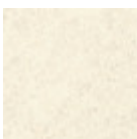
Charcoal savoia crystalceramic



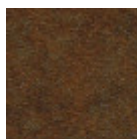
Cement savoia crystalceramic



Emperador marble crystalceramic



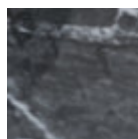
Oxide white crystalceramic



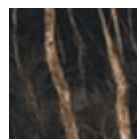
Corten crystalceramic



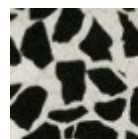
Crystalceramic with effect calacatta marble



Crystalceramic glossy black greek marble

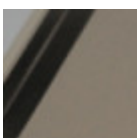


Crystalceramic with effect noir desir marble

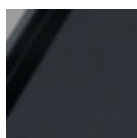


Venetian crystalceramic

Extensions



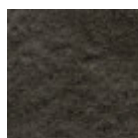
Matt sand antiscratch glass



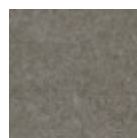
Matt graphite antiscratch glass



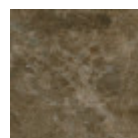
Lead crystalceramic



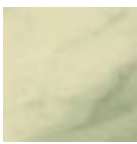
Charcoal savoia crystalceramic



Cement savoia crystalceramic



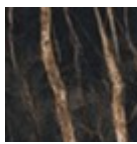
Emperador marble crystalceramic



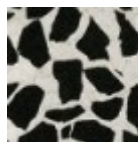
Crystalceramic with effect calacatta marble



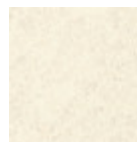
Crystalceramic glossy black greek marble



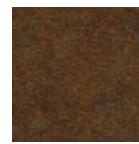
Crystalceramic with effect noir desir marble



Venetian crystalceramic

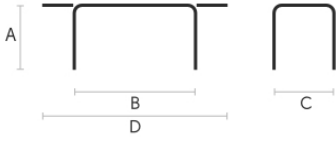


Oxide white crystalceramic



Corten crystalceramic

Dimensions



Volumetric Details

Weight 153 Kg

Volume 0.87 mc

Package 5

	A	B	C	D
	(cm)	(cm)	(cm)	(cm)
	(inch)	(inch)	(inch)	(inch)
160/240x90				
(cm)	75	160	90	240
(inch)	29.5	63	35.4	94.5
200/300x100				
(cm)	76	200	100	300
(inch)	29.9	78.7	39.4	118.1