



Alexander Extendable Table

design Midj R&D, 2018



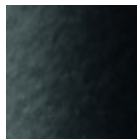
Extendable table with four legs base in lacquered steel. Top in antiscratch glass or crystalceramic.

Colors and Materials

Structure



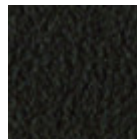
White steel



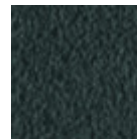
Black steel



Sand steel

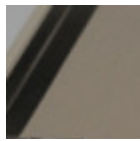


Brown steel

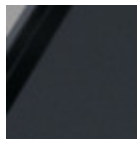


Grafite steel

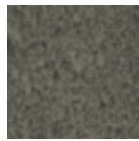
Coating



Matt sand antiscratch glass



Matt graphite antiscratch glass



Lead crystalceramic



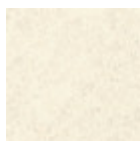
Charcoal savoia crystalceramic



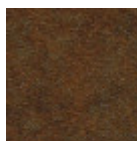
Cement savoia crystalceramic



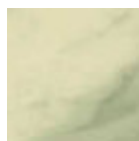
Emperador marble crystalceramic



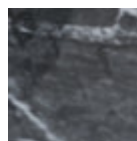
Oxide white crystalceramic



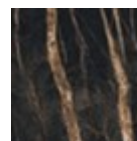
Corten crystalceramic



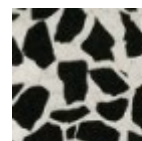
Crystalceramic with effect calacatta marble



Cristalceramica marmo greco nero lucido

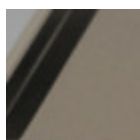


Cristalceramica marmo noir desir

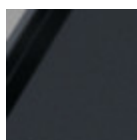


Cristalceramica veneziano

Extensions



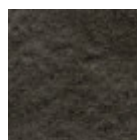
Matt sand antiscratch glass



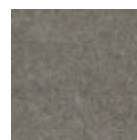
Matt graphite antiscratch glass



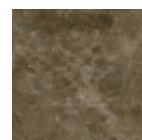
Lead crystalceramic



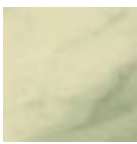
Charcoal savoia crystalceramic



Cement savoia crystalceramic



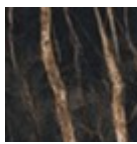
Emperador marble crystalceramic



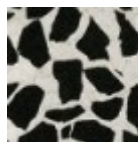
Crystalceramic with effect calacatta marble



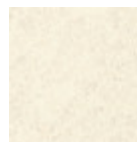
Crystalceramic glossy black greek marble



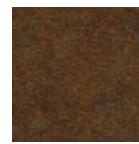
Crystalceramic with effect noir desir marble



Venetian crystalceramic

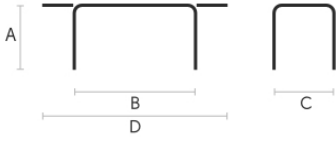


Oxide white crystalceramic



Corten crystalceramic

Dimensions



Volumetric Details

Weight 136 Kg

Volume 0.75 mc

Package 4

	A	B	C	D
	(cm)	(cm)	(cm)	(cm)
	(inch)	(inch)	(inch)	(inch)
160/240x90				
(cm)	75	160	90	240
(inch)	29.5	63	35.4	94.5
200/300x100				
(cm)	76	200	100	300
(inch)	29.9	78.7	39.4	118.1