



Guapa DPA M CU Armchair

design Sempere#Poli Design, 2014

Guapa DPA swivel and high adjustable armchair with five-ways base in lacquered steel. Tilt mechanism integrated. It comes with white wheels combined with a white base or with chrome wheels with black edge combined with the black base. Seat and backrest are in hide.

Colors and Materials

Structure



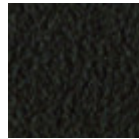
White steel



Black steel



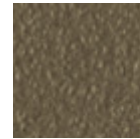
Sand steel



Brown steel



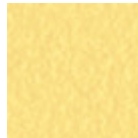
Grafite steel



Fango steel



Bronze Steel



Pastel yellow steel



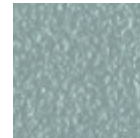
Ocher steel



Red steel



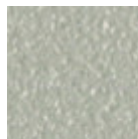
Sage green steel



Light blue steel



Ocean blue steel

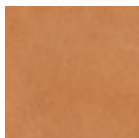


Light grey steel



Facepowder pink steel

Coating

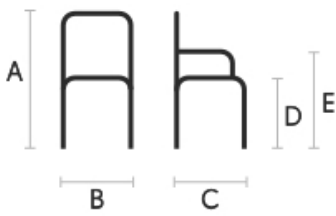


Tuscan hide
3 Colors



TK Hide
9 Colors

Dimensions



Volumetric Details

Weight 17 Kg
Volume 0.44 mc
Package 1

| | cm | inch |
|---|---------|-----------|
| A | 107/116 | 42.1/45.7 |
| B | 69 | 22.4 |
| C | 70 | 24.4 |
| D | 43/57 | 16.9/22.5 |
| E | 62/73 | 24.4/28.7 |

Materials Certifications

Tuscan hide

Tuscan Hide does not fear to get aged since the oldest it gets the more unique it becomes.

It is a material deriving from animal's leather which suffer a process called "vegetable tanning" with natural tannins and with the help of some products biologically compatible whether for the dyeing or for the finishing.

Any possible imperfection, sign, scar, stain of the Tuscan hide surface are a natural characteristics which guarantees its originality.

Materials Certifications

TK Hide

PROPRIETIES AND ADVANTAGES

The hide is a hygienic and very practical product: it resists to wear, it's impermeable to water but, at the same time, the hide wicks air and sweat. The hide is obtained from the skin of bovines breeds and slaughtered for food purposes and subsequently treated with chromium salts.

CLEANING INSTRUCTIONS

Use only a damp, non abrasive cloth; do not use products containing solvents or alcohol that may damagethe surface. It is advisable to test an invisible area of the product before cleaning it all. For good preservation of the product purchased, it is unadvisable to expose it to direct sunlight that may alter its features and colours. Any surface imperfections are natural features of hide and guarantee that it is an original product.



Guapa DPB M CU Armchair

design Sempere#Poli Design, 2014

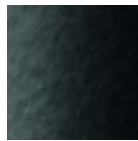
Guapa DPB swivel and high adjustable armchair with low backrest with five-ways base in lacquered steel. Tilt mechanism integrated. It comes with white wheels combined with a white base or with chrome wheels with black edge combined with the black base. Seat and backrest are in hide.

Colors and Materials

Structure



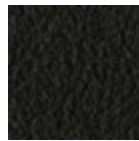
White steel



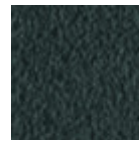
Black steel



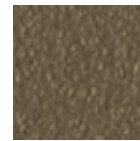
Sand steel



Brown steel



Grafite steel



Fango steel



Bronze Steel



Pastel yellow steel



Ocher steel



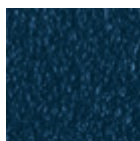
Red steel



Sage green steel



Light blue steel



Ocean blue steel

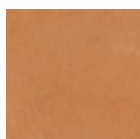


Light grey steel



Facepowder pink steel

Coating

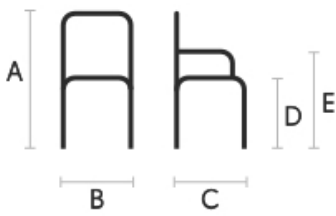


Tuscan hide
3 Colors



TK Hide
9 Colors

Dimensions



Volumetric Details

Weight 13 Kg

Volume 0.34 mc

Package 1

| | cm | inch |
|---|-------|-----------|
| A | 68/82 | 26.8/32.3 |
| B | 67 | 26.4 |
| C | 53 | 20.9 |
| D | 43/57 | 16.9/22.5 |
| E | 62/73 | 24.4/28.7 |

Materials Certifications

Tuscan hide

Tuscan Hide does not fear to get aged since the oldest it gets the more unique it becomes.

It is a material deriving from animal's leather which suffer a process called "vegetable tanning" with natural tannins and with the help of some products biologically compatible whether for the dyeing or for the finishing.

Any possible imperfection, sign, scar, stain of the Tuscan hide surface are a natural characteristics which guarantees its originality.

Materials Certifications

TK Hide

PROPRIETIES AND ADVANTAGES

The hide is a hygienic and very practical product: it resists to wear, it's impermeable to water but, at the same time, the hide wicks air and sweat. The hide is obtained from the skin of bovines breeds and slaughtered for food purposes and subsequently treated with chromium salts.

CLEANING INSTRUCTIONS

Use only a damp, non abrasive cloth; do not use products containing solvents or alcohol that may damagethe surface. It is advisable to test an invisible area of the product before cleaning it all. For good preservation of the product purchased, it is unadvisable to expose it to direct sunlight that may alter its features and colours. Any surface imperfections are natural features of hide and guarantee that it is an original product.



Guapa P MX CU Armchair

design Sempere#Poli Design, 2014

Guapa swivel armchair with four ways trestle base in lacquered steel.
Shell in hide.

Colors and Materials

Structure



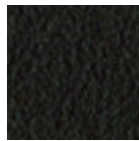
White steel



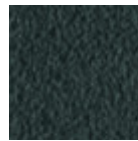
Black steel



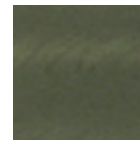
Sand steel



Brown steel

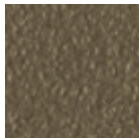


Grafite steel



Industrial steel

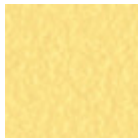
1 color



Fango steel



Bronze Steel



Pastel yellow steel



Ocher steel



Red steel



Sage green steel



Light blue steel



Ocean blue steel

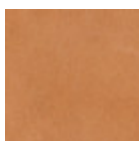


Light grey steel



Facepowder pink steel

Coating



Tuscan hide

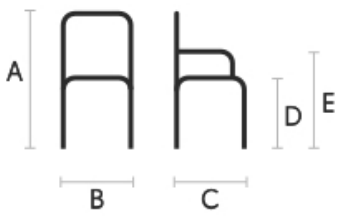
3 Colors



TK Hide

9 Colors

Dimensions



Volumetric Details

Weight 12 Kg

Volume 0.22 mc

Package 1

| | cm | inch |
|---|----|------|
| A | 83 | 32.7 |
| B | 67 | 26.4 |
| C | 55 | 21.7 |
| D | 47 | 18.5 |
| E | 62 | 24.4 |

Materials Certifications

Tuscan hide

Tuscan Hide does not fear to get aged since the oldest it gets the more unique it becomes.

It is a material deriving from animal's leather which suffer a process called "vegetable tanning" with natural tannins and with the help of some products biologically compatible whether for the dyeing or for the finishing.

Any possible imperfection, sign, scar, stain of the Tuscan hide surface are a natural characteristics which guarantees its originality.

Materials Certifications

TK Hide

PROPRIETIES AND ADVANTAGES

The hide is a hygienic and very practical product: it resists to wear, it's impermeable to water but, at the same time, the hide wicks air and sweat. The hide is obtained from the skin of bovines breeds and slaughtered for food purposes and subsequently treated with chromium salts.

CLEANING INSTRUCTIONS

Use only a damp, non abrasive cloth; do not use products containing solvents or alcohol that may damagethe surface. It is advisable to test an invisible area of the product before cleaning it all. For good preservation of the product purchased, it is unadvisable to expose it to direct sunlight that may alter its features and colours. Any surface imperfections are natural features of hide and guarantee that it is an original product.