

Trampoliere H34 ø70 Coffee Table

design Roberto Paoli, 2013

Coffee table with three-spoke base in painted steel. Top in melamine or HPL.



Colors and Materials

Structure



White steel



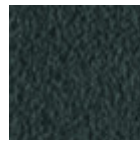
Black steel



Sand steel



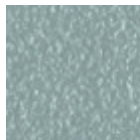
Brown steel



Grafite steel



Pastel yellow steel



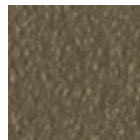
Light blue steel



Ocean blue steel



Bronze Steel



Fango steel



Light grey steel



Ocher steel



Facepowder pink steel

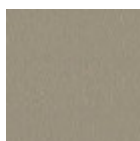


Red steel



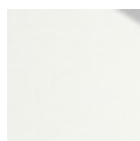
Sage green steel

Coating

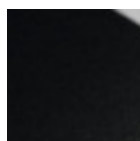


Melamine

8 Colors



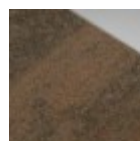
White hpl black core



Black hpl



Hpl cemento

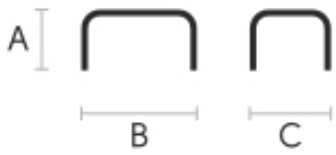


Hpl corten



White hpl white core

Dimensions



Volumetric Details

Weight 15.5 Kg

Volume 0.2 mc

Package 2

	A	B	C
	(cm)	(cm)	(cm)
	(inch)	(inch)	(inch)
Trampoliere	34	70	70
H34 (cm)	13.4	27.6	27.6
(inch)			



Trampoliere H44 ø60 Coffee Table

design Roberto Paoli, 2013



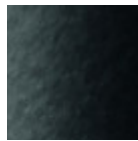
Coffee table with three-spoke base in painted steel and height 44cm.
Top ø60 in melamine or HPL.

Colors and Materials

Structure



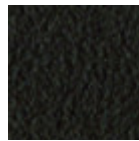
White steel



Black steel



Sand steel



Brown steel



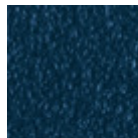
Grafite steel



Pastel yellow steel



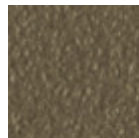
Light blue steel



Ocean blue steel



Bronze Steel



Fango steel



Light grey steel



Ocher steel



Facepowder pink steel

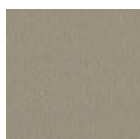


Red steel



Sage green steel

Coating

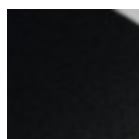


Melamine

8 Colors



White hpl black core



Black hpl



Hpl cemento

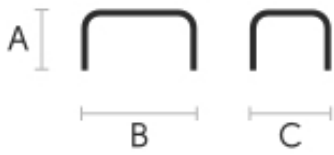


Hpl corten



White hpl white core

Dimensions



Volumetric Details

Weight 13.5 Kg

Volume 0.16 mc

Package 2

	A	B	C
	(cm)	(cm)	(cm)
	(inch)	(inch)	(inch)
Trampoliere	44	60	60
H44 (cm)	17.3	23.6	23.6
(inch)			

Trampoliere H54 ø50 Coffee Table

design Roberto Paoli, 2013

Coffee table with three-spoke base in painted steel and height 54cm.
Top ø50 in melamine or HPL.

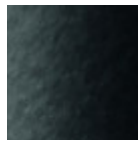


Colors and Materials

Structure



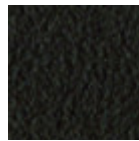
White steel



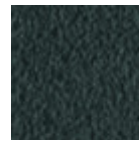
Black steel



Sand steel



Brown steel



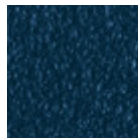
Grafite steel



Pastel yellow steel



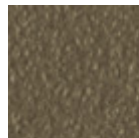
Light blue steel



Ocean blue steel



Bronze Steel



Fango steel



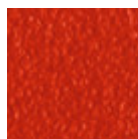
Light grey steel



Ocher steel



Facepowder pink steel

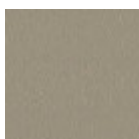


Red steel



Sage green steel

Coating

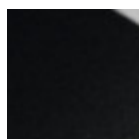


Melamine

8 Colors



White hpl black core



Black hpl



Hpl cemento

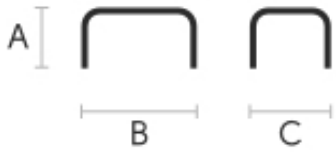


Hpl corten



White hpl white core

Dimensions



Volumetric Details

Weight 14.5 Kg

Volume 0.15 mc

Package 2

	A (cm) (inch)	B (cm) (inch)	C (cm) (inch)
H54 (cm) (inch)	54 21.3	50 19.7	50 19.7