



# Paw CTL Coffee Table

design Studio Pastina, 2020



Paw coffee table with four-legs base in lacquered metal. Top available in ceramic or metal.

The version with metal top is suitable for outdoor use. The Paw coffee table is available in three different sizes.

## Colors and Materials

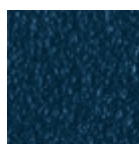
### Structure



Light blue steel



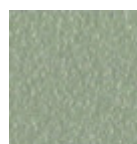
White steel



Ocean blue steel



Bronze Steel



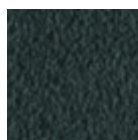
Sand steel



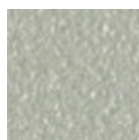
Fango steel



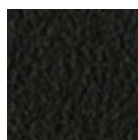
Pastel yellow steel



Grafite steel



Light grey steel



Brown steel



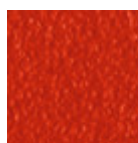
Black steel



Ocher steel



Facepowder pink steel

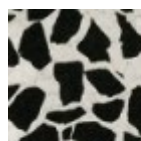


Red steel

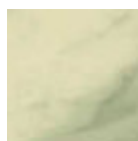


Sage green steel

### Coating

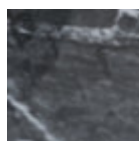


Venetian glossy ceramic

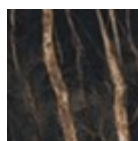


Ceramic with effect calacatta marble

1 color



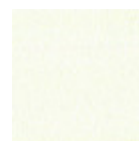
Black greek glossy marble ceramic



Noir desir glossy ceramic marble



Light blue steel



White steel



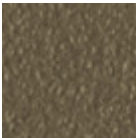
Ocean blue steel



Bronze Steel



Sand steel



Fango steel



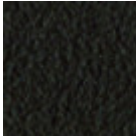
Pastel yellow steel



Grafite steel



Light grey steel



Brown steel



Black steel



Ocher steel



Facepowder pink steel

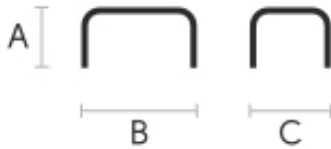


Red steel



Sage green steel

## Dimensions



	cm	inch
A	50	19.7
B	90	35.4
C	50	19.7

## Volumetric Details

Weight 14 Kg  
Volume 0.24 mc  
Package 1



# Paw CTS Coffee Table

design Studio Pastina, 2020



Paw coffee table with four-legs base in lacquered metal. Top available in ceramic or metal.

The version with metal top is suitable for outdoor use. The Paw coffee table is available in three different sizes.

## Colors and Materials

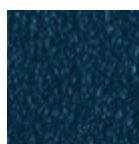
### Structure



Light blue steel



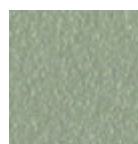
White steel



Ocean blue steel



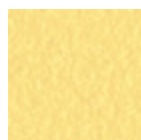
Bronze Steel



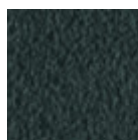
Sand steel



Fango steel



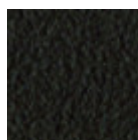
Pastel yellow steel



Grafite steel



Light grey steel



Brown steel



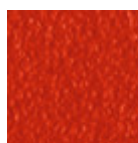
Black steel



Ocher steel



Facepowder pink steel

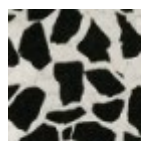


Red steel

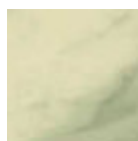


Sage green steel

### Coating

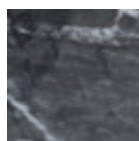


Venetian glossy ceramic

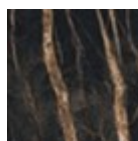


Ceramic with effect calacatta marble

1 color



Black greek glossy marble ceramic



Noir desir glossy ceramic marble



Light blue steel



White steel



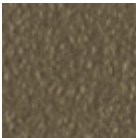
Ocean blue steel



Bronze Steel



Sand steel



Fango steel



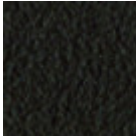
Pastel yellow steel



Grafite steel



Light grey steel



Brown steel



Multicolor steel



Black steel



Ocher steel



Facepowder pink steel

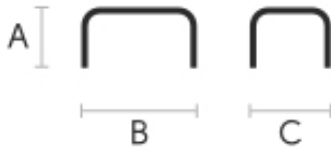


Red steel



Sage green steel

## Dimensions



	cm	inch
A	40	15.7
B	50	19.7
C	50	19.7

## Volumetric Details

Weight 8 Kg  
Volume 0.11 mc  
Package 1



# Paw CTS Coffee Table

design Studio Pastina, 2020



Paw coffee table with four-legs base in lacquered metal. Top available in ceramic or metal.

The version with metal top is suitable for outdoor use. The Paw coffee table is available in three different sizes.

## Colors and Materials

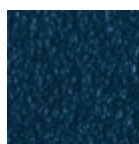
### Structure



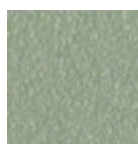
Light blue steel



White steel



Ocean blue steel



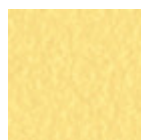
Sand steel



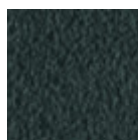
Bronze Steel



Fango steel



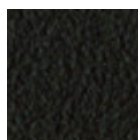
Pastel yellow steel



Grafite steel



Light grey steel



Brown steel



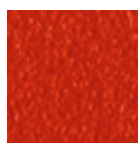
Black steel



Ocher steel



Facepowder pink steel

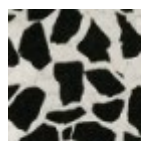


Red steel

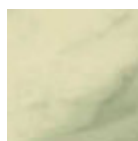


Sage green steel

### Coating

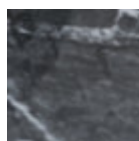


Venetian glossy ceramic

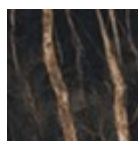


Ceramic with effect calacatta marble

1 color



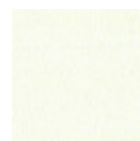
Black greek glossy marble ceramic



Noir desir glossy ceramic marble



Light blue steel



White steel



Ocean blue steel



Bronze Steel



Sand steel



Fango steel



Pastel yellow steel



Grafite steel



Light grey steel



Brown steel



Black steel



Ocher steel



Facepowder pink steel

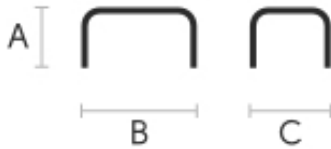


Red steel



Sage green steel

## Dimensions



	cm	inch
A	30	11.8
B	90	35.4
C	50	19.7

## Volumetric Details

Weight 13 Kg  
Volume 0.14 mc  
Package 1