



Lea CT-L Coffee Table

design Paolo Vernier, 2019



Lea coffee table with four legs base in lacquered steel. Top in wood or ceramic.

The Lea coffee table is available in three different sizes and is suitable for overlapping games. Pure and essential in shape, the Lea coffee table is perfect alone or in the original compositions of interlocking tops. Different sizes and materials create a versatile furniture solution, capable of adapting to every need and interior style.

Colors and Materials

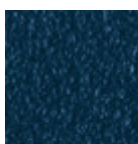
Coating



Light blue steel



White steel



Ocean blue steel



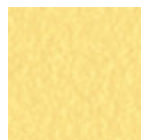
Bronze Steel



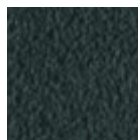
Sand steel



Fango steel



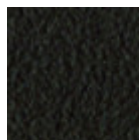
Pastel yellow steel



Grafite steel



Light grey steel



Brown steel



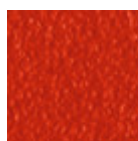
Black steel



Ocher steel



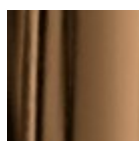
Facepowder pink steel



Red steel



Sage green steel



Golden bronze

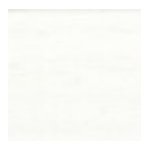


Pink Gold

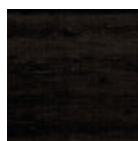


Black Nickel

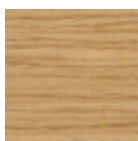
Extensions



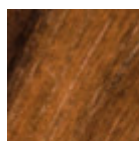
White lacquered veneered wood



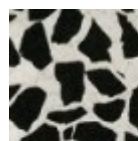
Black lacquered veneered wood



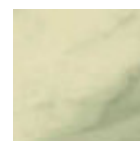
Veneered wood natural oak finish



Veneered flamed walnut

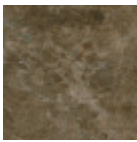


Venetian glossy ceramic

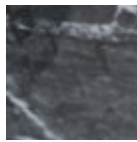


Ceramic with effect calacatta marble

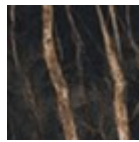
1 color



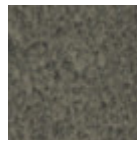
Emperador marble ceramic



Black greek glossy marble ceramic



Noir desir glossy ceramic marble



Lead ceramic

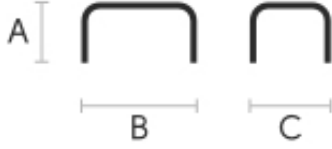


Charcoal savoia ceramic



Cement Savoia Ceramic

Dimensions



	A (cm) (inch)	B (cm) (inch)	C (cm) (inch)
CT-L (cm) (inch)	34 13.4	108 42.5	39 15.4
CT-M (cm) (inch)	40 15.7	65 25.6	45 17.7
CT-S (cm) (inch)	40 15.7	51 20.1	51 20.1

Volumetric Details

Weight 12.5 Kg

Volume 0.16 mc

Package 1



Lea CT-M Coffee Table

design Paolo Vernier, 2019



Lea coffee table with four legs base in lacquered steel. Top in wood or ceramic.

The Lea coffee table is available in three different sizes and is suitable for overlapping games. Pure and essential in shape, the Lea coffee table is perfect alone or in the original compositions of interlocking tops. Different sizes and materials create a versatile furniture solution, capable of adapting to every need and interior style.

Colors and Materials

Structure



Light blue steel



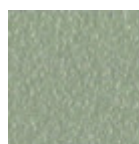
White steel



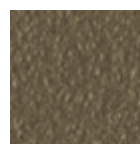
Ocean blue steel



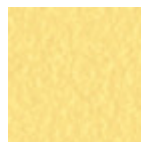
Bronze Steel



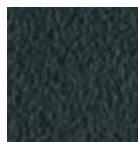
Sand steel



Fango steel



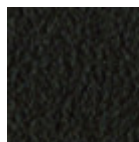
Pastel yellow steel



Grafite steel



Light grey steel



Brown steel



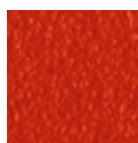
Black steel



Ocher steel



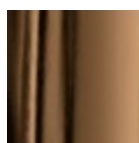
Facepowder pink steel



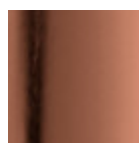
Red steel



Sage green steel



Golden bronze

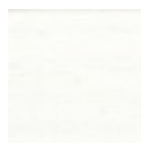


Pink Gold

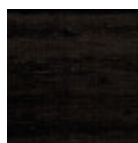


Black Nickel

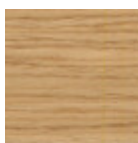
Coating



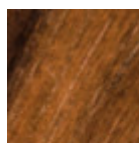
White lacquered veneered wood



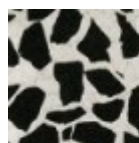
Black lacquered veneered wood



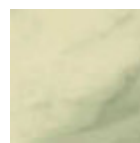
Veneered wood natural oak finish



Veneered flamed walnut



Venetian glossy ceramic



Ceramic with effect calacatta marble

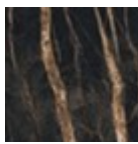
1 color



Emperador marble ceramic



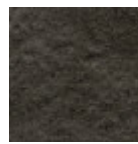
Black greek glossy marble ceramic



Noir desir glossy ceramic marble



Lead ceramic

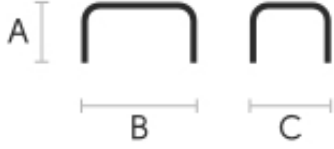


Charcoal savoia ceramic



Cement Savoia Ceramic

Dimensions



	A (cm) (inch)	B (cm) (inch)	C (cm) (inch)
CT-M (cm) (inch)	40 15.7	65 25.6	45 17.7
CT-S (cm) (inch)	40 15.7	51 20.1	51 20.1
CT-L (cm) (inch)	34 13.4	108 42.5	39 15.4

Volumetric Details

Weight 10.5 Kg

Volume 0.11 mc

Package 1

Lea CT-S Coffee Table

design Paolo Vernier, 2019

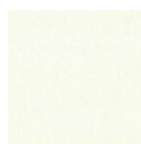


Lea coffee table with four legs base in lacquered steel. Top in wood or ceramic.

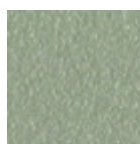
The Lea coffee table is available in three different sizes and is suitable for overlapping games. Pure and essential in shape, the Lea coffee table is perfect alone or in the original compositions of interlocking tops. Different sizes and materials create a versatile furniture solution, capable of adapting to every need and interior style.

Colors and Materials

Structure



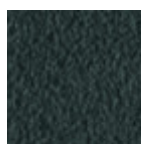
White steel



Sand steel



Pastel yellow steel



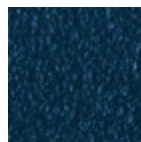
Grafite steel



Black steel



Light blue steel



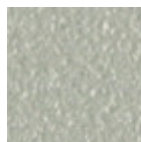
Ocean blue steel



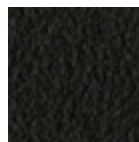
Bronze Steel



Fango steel



Light grey steel



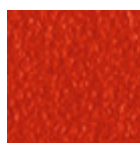
Brown steel



Ocher steel



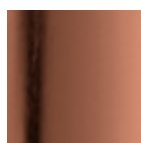
Facepowder pink steel



Red steel



Sage green steel



Pink Gold

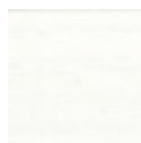


Black Nickel

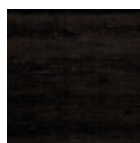


Golden bronze

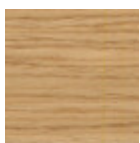
Coating



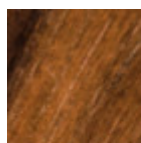
White lacquered veneered wood



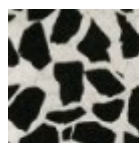
Black lacquered veneered wood



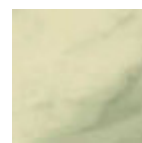
Veneered wood natural oak finish



Veneered flamed walnut

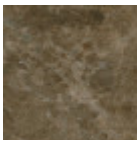


Venetian glossy ceramic

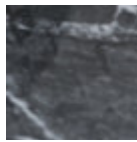


Ceramic with effect calacatta marble

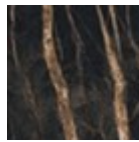
1 color



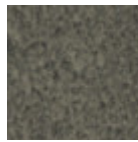
Emperador marble ceramic



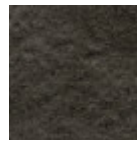
Black greek glossy marble ceramic



Noir desir glossy ceramic marble



Lead ceramic

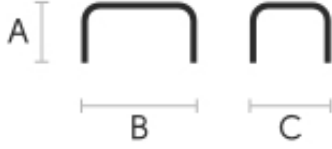


Charcoal savoia ceramic



Cement Savoia Ceramic

Dimensions



Volumetric Details

Weight 8.5 Kg

Volume 0.10 mc

Package 1

	A (cm) (inch)	B (cm) (inch)	C (cm) (inch)
CT-S (cm) (inch)	40 15.7	51 20.1	51 20.1
CT-M (cm) (inch)	40 15.7	65 25.6	45 17.7
CT-L (cm) (inch)	34 13.4	108 42.5	39 15.4