



## Apelle Chic Coffee Table

design Beatriz Sempere, 2013

Apelle Chic coffee table with structure in matt lacquered or glossy steel.  
Top in ceramic or upholstered in hide.

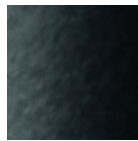
Coffee table available in three different heights: h73 cm (28.7 in), h62 cm (24.4 in), h43 cm (16.9 in).

### Colors and Materials

#### Structure



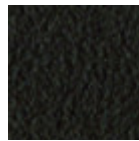
White steel



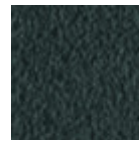
Black steel



Sand steel



Brown steel



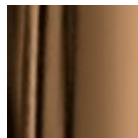
Grafite steel



Pink Gold



Black Nickel

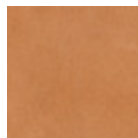


Golden bronze

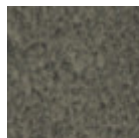
#### Coating



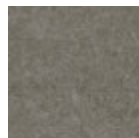
Hide  
20 Colors



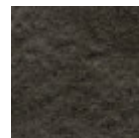
Tuscan hide  
3 Colors



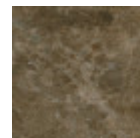
Lead ceramic



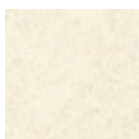
Cement Savoia  
Ceramic



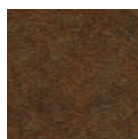
Charcoal savoia  
ceramic



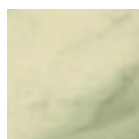
Emperador marble  
ceramic



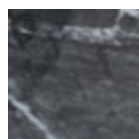
Oxide white ceramic



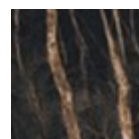
Corten ceramic



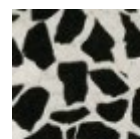
Ceramic with effect  
calacatta marble  
1 color



Black greek glossy  
marble ceramic

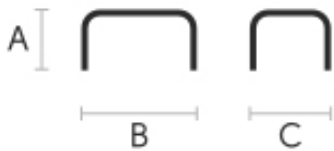


Noir desir glossy  
ceramic marble



Venetian glossy  
ceramic

### Dimensions



## Volumetric Details

**Weight** 7,5 Kg  
**Volume** 0,15 mc  
**Package** 1

	<b>A (cm)</b> (inch)	<b>B (cm)</b> (inch)	<b>C (cm)</b> (inch)
<b>H43 (cm)</b> (inch)	43 16.9	42 16.5	40 15.7
<b>H63 (cm)</b> (inch)	63 24.8	45 17.7	40 15.7
<b>H73 (cm)</b> (inch)	73 28.7	47 18.5	42 16.5

## Materials Certifications

### Hide

#### FIRE RESISTANCE:

Technical Bulletin 117/00 sez E part. 1  
 EN 1021 parte 1/94, parte 2/94  
 BS 5852/90

#### PROPRIETIES AND ADVANTAGES

The hide is a hygienic and very practical product: it resists to wear, it's impermeable to water but, at the same time, the hide wicks air and sweat. The hide is obtained from the skin of bovines breeds and slaughtered for food purposes and subsequently treated with chromium salts.

#### CLEANING INSTRUCTIONS

Use only a damp, non abrasive cloth; do not use products containing solvents or alcohol that may damage the surface. It is advisable to test an invisible area of the product before cleaning it all. For good preservation of the product purchased, it is unadvisable to expose it to direct sunlight that may alter its features and colours. Any surface imperfections are natural features of hide and guarantee that it is an original product.

## Materials Certifications

### Tuscan hide

Tuscan Hide does not fear to get aged since the oldest it gets the more unique it becomes.

It is a material deriving from animal's leather which suffer a process called "vegetable tanning" with natural tannins and with the help of some products biologically compatible whether for the dyeing or for the finishing.

Any possible imperfection, sign, scar, stain of the Tuscan hide surface are a natural characteristics which guarantees its originality.

## Apelle CT Coffee Table

design Beatriz Sempere, 2013

Apelle coffee table. Frame available in lacquered, chrome, black nickel or pink gold steel. Hide top.



### Colors and Materials

#### Structure



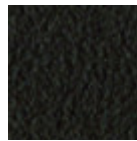
White steel



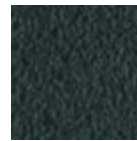
Black steel



Sand steel



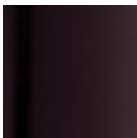
Brown steel



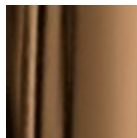
Grafite steel



Pink Gold



Black Nickel

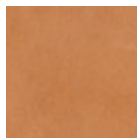


Golden bronze

#### Coating

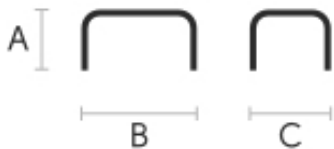


Hide  
20 Colors



Tuscan hide  
3 Colors

### Dimensions



## Volumetric Details

**Weight** 7 Kg  
**Volume** 0.09 mc  
**Package** 1

	A (cm) (inch)	B (cm) (inch)	C (cm) (inch)
<b>Apelle CT (cm)</b> (inch)	49 19.3	39 15.4	37 14.6

## Materials Certifications

### Hide

#### FIRE RESISTANCE:

Technical Bulletin 117/00 sez E part. 1  
 EN 1021 parte 1/94, parte 2/94  
 BS 5852/90

#### PROPRIETIES AND ADVANTAGES

The hide is a hygienic and very practical product: it resists to wear, it's impermeable to water but, at the same time, the hide wicks air and sweat. The hide is obtained from the skin of bovines breeds and slaughtered for food purposes and subsequently treated with chromium salts.

#### CLEANING INSTRUCTIONS

Use only a damp, non abrasive cloth; do not use products containing solvents or alcohol that may damage the surface. It is advisable to test an invisible area of the product before cleaning it all. For good preservation of the product purchased, it is unadvisable to expose it to direct sunlight that may alter its features and colours. Any surface imperfections are natural features of hide and guarantee that it is an original product.

## Materials Certifications

### Tuscan hide

Tuscan Hide does not fear to get aged since the oldest it gets the more unique it becomes.

It is a material deriving from animal's leather which suffer a process called "vegetable tanning" with natural tannins and with the help of some products biologically compatible whether for the dyeing or for the finishing.

Any possible imperfection, sign, scar, stain of the Tuscan hide surface are a natural characteristics which guarantees its originality.



# Apelle Trio Coffee Table

design Beatriz Sempere, 2013

Apelle Trio coffe table with structure in white, black lacquered steel, pink gold or black nickel. Tops in ceramic or upholstered in hide.

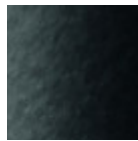


## Colors and Materials

### Structure



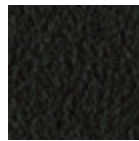
White steel



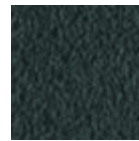
Black steel



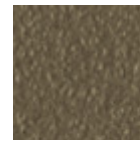
Sand steel



Brown steel



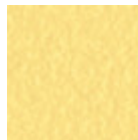
Grafite steel



Fango steel



Bronze Steel



Pastel yellow steel



Ocher steel



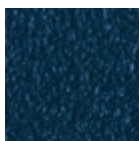
Red steel



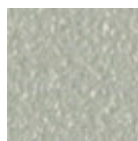
Sage green steel



Light blue steel



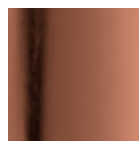
Ocean blue steel



Light grey steel



Facepowder pink steel



Pink Gold



Black Nickel

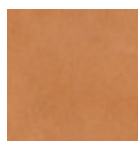


Golden bronze

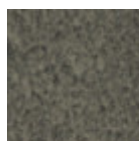
### Coating



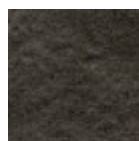
Hide  
20 Colors



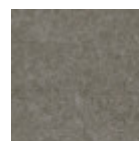
Tuscan hide  
3 Colors



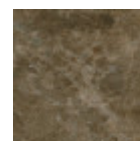
Lead ceramic



Charcoal savoia ceramic



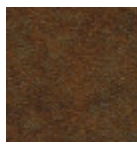
Cement Savoia Ceramic



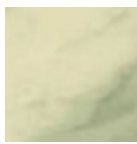
Emperador marble ceramic



Oxide white ceramic

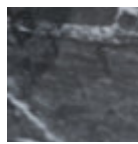


Corten ceramic

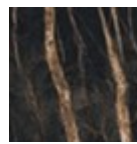


Ceramic with effect calacatta marble

1 color



Black greek glossy marble ceramic

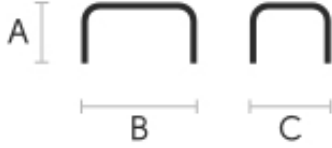


Noir desir glossy ceramic marble



Venetian glossy ceramic

## Dimensions



	A (cm) (inch)	B (cm) (inch)	C (cm) (inch)
<b>Apelle</b>	55	71	62
<b>TRIO (cm)</b> (inch)	21.7	28	24.4

## Volumetric Details

**Weight** 15 Kg

**Volume** 0,25 mc

**Package** 1

## Materials Certifications

### Hide

#### FIRE RESISTANCE:

Technical Bulletin 117/00 sez E part. 1

EN 1021 parte 1/94, parte 2/94

BS 5852/90

#### PROPRIETIES AND ADVANTAGES

The hide is a hygienic and very practical product: it resists to wear, it's impermeable to water but, at the same time, the hide wicks air and sweat. The hide is obtained from the skin of bovines breeds and slaughtered for food purposes and subsequently treated with chromium salts.

#### CLEANING INSTRUCTIONS

Use only a damp, non abrasive cloth; do not use products containing solvents or alcohol that may damage the surface. It is advisable to test an invisible area of the product before cleaning it all. For good preservation of the product purchased, it is unadvisable to expose it to direct sunlight that may alter its features and colours. Any surface imperfections are natural features of hide and guarantee that it is an original product.

## Materials Certifications

### Tuscan hide

Tuscan Hide does not fear to get aged since the oldest it gets the more unique it becomes.

It is a material deriving from animal's leather which suffer a process called "vegetable tanning" with natural tannins and with the help of some products biologically compatible whether for the dyeing or for the finishing.

Any possible imperfection, sign, scar, stain of the Tuscan hide surface are a natural characteristics which guarantees its originality.