

MIDJ INITALY



Pippi P R_TS Chair

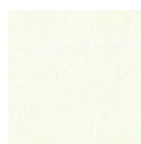
design Roberto Paoli, 2019

Armchair with four legs frame upholstered in fabric. Steel feet.

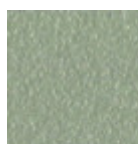
The Pippi collection has been awarded with the **Good Design Award** - <https://www.midj.com/world/the-pippi-collection-awarded-with-the-good-design-award-2019> 2019 and German Design Award 2021. Mono-material and monochromatic, the Pippi armchair is a hymn to simplicity and softness. The sinuous curves and the soft padding combine design and seating comfort, integrating perfectly in different interior styles. Learn more about Pippi collection: the designer **Roberto Paoli** [tells the concept](https://www.midj.com/about/videos/roberto-paoli-tells-about-pippi-collection) - <https://www.midj.com/about/videos/roberto-paoli-tells-about-pippi-collection> of this collection.

Colors and Materials

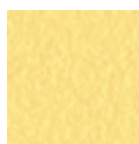
Structure



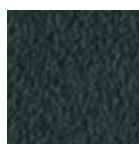
White steel



Sand steel



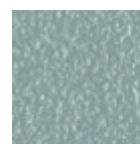
Pastel yellow steel



Grafite steel



Black steel



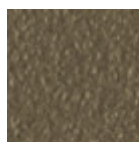
Light blue steel



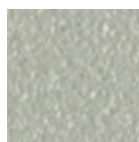
Ocean blue steel



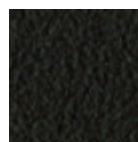
Bronze Steel



Fango steel



Light grey steel



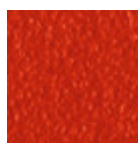
Brown steel



Ocher steel



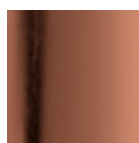
Facepowder pink steel



Red steel



Sage green steel

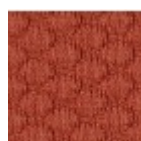


Pink Gold



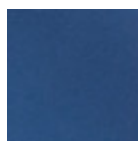
Black Nickel

Coating



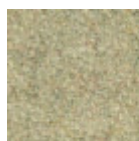
Visual fabric

11 Colors



Flexy faux leather

5 Colors



Fenix Wool fabric

13 Colors

Dimensions



Volumetric Details

Weight 8.5 Kg
Volume 0.27 mc
Package 1

	cm	inch
A	78	30.7
B	56	22.1
C	53	20.9
D	46	18.1

Materials Certifications

Flexy faux leather

MARTINDALE: 10.000 cycles

COMPOSITION
50% PU, 40% PA, 10% EA

FIRE RESISTANCE
BS 5852-1 source 0

CLEANING RULES
Brush regularly with a soft bristle brush. You can dab any stains with a damp cloth soaked in a solution of water and neutral soap or with a water and 20% alcohol solution. Rinse with a clean damp cloth and dry with a dry cloth.

GENERAL WARNINGS
Lack of quick action makes the cleaning less effective, leaving consequently some permanent haloes. To avoid permanent stains, the lighter colours of the article should not be brought into contact with textiles and clothing coloured with unfixed dyes. We cannot guarantee the ability to remove unknown dyes from light coloured product.

Slight color differences between a lot and the other are to be considered normal.

Materials Certifications

Fenix Wool fabric

Martindale: 100.000 cycles
Composition: 75% wool; 25% Polyammide

FIRE RESISTANCE
CLASSE 1 IM,
EN 1021 Part 1-2,
Calif. Bull. 117

PROPRIETIES AND ADVANTAGES
The particular finish of the Fenix Wool fabric is obtained by a stabilization treatment which gives a particularly soft hand but very consistent, able to achieve excellent values of resistance to pilling and abrasion. This fabric is made from regenerated wool. The recycling allows the creation of fabrics even more varied and rich in composition with inimitable content of fantasy. The very contemporary color palette is coordinated harmoniously both for domestic and for the office sector. The fabric is produced

entirely in Italy.

CLEANING INSTRUCTIONS

We recommend to use a regular vacuum cleaner with plain tip, do not brush. Dry cleaning is recommended. Some colorants used for garments or accessories (i.e. jeans) may stain pale colours of this product. This tendency increases in a damp, warm environment.

MIDJ INITALY



Pippi S R_TS Chair

design Roberto Paoli, 2019

Chair with four legs frame upholstered in fabric. Steel feet.

Original character of Pippi enriches the scenes with vivacity, by transforming them into modern and lively spaces. It is the trendy colors, the most daring and refined ones, that add the touch bound to get noticed. Listen to [the story of the designer Roberto Paoli](#)

- <https://www.midj.com/about/videos/roberto-paoli-tells-about-pippi-collection> on the Pippi collection.

Colors and Materials

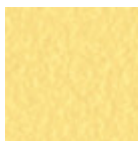
Structure



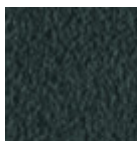
White steel



Sand steel



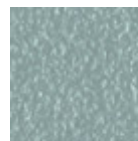
Pastel yellow steel



Grafite steel



Black steel



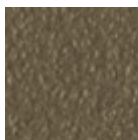
Light blue steel



Ocean blue steel



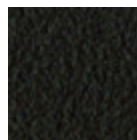
Bronze Steel



Fango steel



Light grey steel



Brown steel



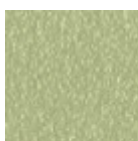
Ocher steel



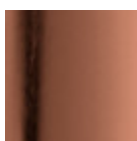
Facepowder pink steel



Red steel



Sage green steel

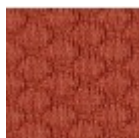


Pink Gold



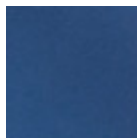
Black Nickel

Coating



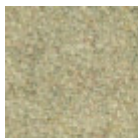
Visual fabric

11 Colors



Flexy faux leather

5 Colors



Fenix Wool fabric

13 Colors

Dimensions



Volumetric Details

Weight 8 Kg
Volume 0.23 mc
Package 1

	cm	inch
A	77	30.3
B	47	18.5
C	55	21.7
D	46	18.1

Materials Certifications

Flexy faux leather

MARTINDALE: 10.000 cycles

COMPOSITION
50% PU, 40% PA, 10% EA

FIRE RESISTANCE
BS 5852-1 source 0

CLEANING RULES
Brush regularly with a soft bristle brush. You can dab any stains with a damp cloth soaked in a solution of water and neutral soap or with a water and 20% alcohol solution. Rinse with a clean damp cloth and dry with a dry cloth.

GENERAL WARNINGS
Lack of quick action makes the cleaning less effective, leaving consequently some permanent haloes. To avoid permanent stains, the lighter colours of the article should not be brought into contact with textiles and clothing coloured with unfixed dyes. We cannot guarantee the ability to remove unknown dyes from light coloured product.

Slight color differences between a lot and the other are to be considered normal.

Materials Certifications

Fenix Wool fabric

Martindale: 100.000 cycles
Composition: 75% wool; 25% Polyammide

FIRE RESISTANCE
CLASSE 1 IM,
EN 1021 Part 1-2,
Calif. Bull. 117

PROPRIETIES AND ADVANTAGES
The particular finish of the Fenix Wool fabric is obtained by a stabilization treatment which gives a particularly soft hand but very consistent, able to achieve excellent values of resistance to pilling and abrasion. This fabric is made from regenerated wool. The recycling allows the creation of fabrics even more varied and rich in composition with inimitable content of fantasy. The very contemporary color palette is coordinated harmoniously both for domestic and for the office sector. The fabric is produced

entirely in Italy.

CLEANING INSTRUCTIONS

We recommend to use a regular vacuum cleaner with plain tip, do not brush. Dry cleaning is recommended. Some colorants used for garments or accessories (i.e. jeans) may stain pale colours of this product. This tendency increases in a damp, warm environment.