



## Guapa P M CU Armchair

design Sempere#Poli Design, 2014

Armchair with sled base. Structure available in lacquered, chrome, pink gold or black nickel steel. Seat and backrest are in hide.

### Colors and Materials

#### Structure



White steel



Black steel



Sand steel



Brown steel



Grafite steel

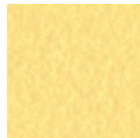


Industrial steel

1 color



Fango steel



Pastel yellow steel



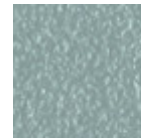
Ocher steel



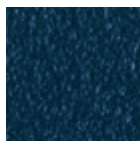
Red steel



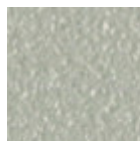
Sage green steel



Light blue steel



Ocean blue steel



Light grey steel



Facepowder pink steel



Chrome

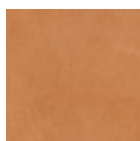


Pink Gold



Black Nickel

#### Coating



Tuscan hide

3 Colors



TK Hide

9 Colors

### Dimensions



## Volumetric Details

**Weight** 11.5 Kg

**Volume** 0.37 mc

**Package** 1

## Certifications



**CATAS**  
EN 1728

	cm	inch
A	82	32.3
B	67	26.4
C	55	21.6
D	46	18.1
E	62	24.4

## Materials Certifications

### Tuscan hide

Tuscan Hide does not fear to get aged since the oldest it gets the more unique it becomes.

It is a material deriving from animal's leather which suffer a process called "vegetable tanning" with natural tannins and with the help of some products biologically compatible whether for the dyeing or for the finishing.

Any possible imperfection, sign, scar, stain of the Tuscan hide surface are a natural characteristics which guarantees its originality.

## Materials Certifications

### TK Hide

#### PROPRIETIES AND ADVANTAGES

The hide is a hygienic and very practical product: it resists to wear, it's impermeable to water but, at the same time, the hide wicks air and sweat. The hide is obtained from the skin of bovines breeds and slaughtered for food purposes and subsequently treated with chromium salts.

#### CLEANING INSTRUCTIONS

Use only a damp, non abrasive cloth; do not use products containing solvents or alcohol that may damage the surface. It is advisable to test an invisible area of the product before cleaning it all. For good preservation of the product purchased, it is unadvisable to expose it to direct sunlight that may alter its features and colours. Any surface imperfections are natural features of hide and guarantee that it is an original product.



## Guapa P MX CU Armchair

design Sempere#Poli Design, 2014

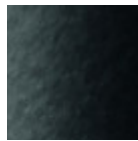
Guapa swivel armchair with four ways trestle base in lacquered steel.  
Shell in hide.

### Colors and Materials

#### Structure



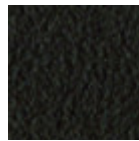
White steel



Black steel



Sand steel



Brown steel

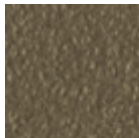


Grafite steel



Industrial steel

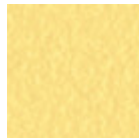
1 color



Fango steel



Bronze Steel



Pastel yellow steel



Ocher steel



Red steel



Sage green steel



Light blue steel



Ocean blue steel

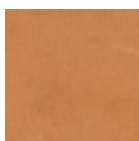


Light grey steel



Facepowder pink steel

#### Coating



Tuscan hide

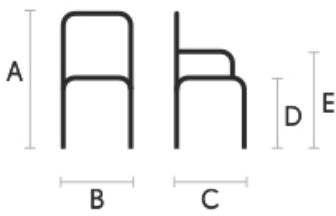
3 Colors



TK Hide

9 Colors

### Dimensions



## Volumetric Details

**Weight** 12 Kg

**Volume** 0.22 mc

**Package** 1

	cm	inch
A	83	32.7
B	67	26.4
C	55	21.7
D	47	18.5
E	62	24.4

## Materials Certifications

### Tuscan hide

Tuscan Hide does not fear to get aged since the oldest it gets the more unique it becomes.

It is a material deriving from animal's leather which suffer a process called "vegetable tanning" with natural tannins and with the help of some products biologically compatible whether for the dyeing or for the finishing.

Any possible imperfection, sign, scar, stain of the Tuscan hide surface are a natural characteristics which guarantees its originality.

## Materials Certifications

### TK Hide

#### PROPRIETIES AND ADVANTAGES

The hide is a hygienic and very practical product: it resists to wear, it's impermeable to water but, at the same time, the hide wicks air and sweat. The hide is obtained from the skin of bovines breeds and slaughtered for food purposes and subsequently treated with chromium salts.

#### CLEANING INSTRUCTIONS

Use only a damp, non abrasive cloth; do not use products containing solvents or alcohol that may damage the surface. It is advisable to test an invisible area of the product before cleaning it all. For good preservation of the product purchased, it is unadvisable to expose it to direct sunlight that may alter its features and colours. Any surface imperfections are natural features of hide and guarantee that it is an original product.



# Guapa S M CU Chair

design Sempere#Poli Design, 2014

Chair with sled base and structure available in chrome, pink gold, black nickel or lacquered steel. Seat and backrest are in hide.

## Colors and Materials

### Structure



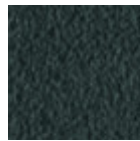
White steel



Black steel



Sand steel

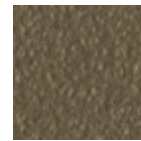


Grafite steel



Industrial steel

1 color



Fango steel



Bronze Steel



Pastel yellow steel



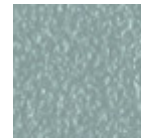
Ocher steel



Red steel



Sage green steel



Light blue steel



Ocean blue steel



Light grey steel



Facepowder pink steel



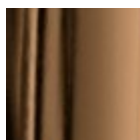
Chrome



Pink Gold

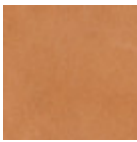


Black Nickel



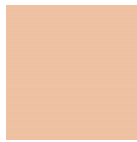
Golden bronze

### Coating



### Tuscan hide

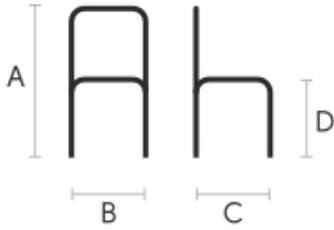
3 Colors



### TK Hide

9 Colors

## Dimensions



	cm	inch
A	78	30.7
B	50	19.7
C	52	20.5
D	46	18.1

## Volumetric Details

Weight 10 Kg  
 Volume 0.25 mc  
 Package 1

## Certifications



## Materials Certifications

### Tuscan hide

Tuscan Hide does not fear to get aged since the oldest it gets the more unique it becomes. It is a material deriving from animal's leather which suffer a process called "vegetable tanning" with natural tannins and with the help of some products biologically compatible whether for the dyeing or for the finishing. Any possible imperfection, sign, scar, stain of the Tuscan hide surface are a natural characteristics which guarantees its originality.

## Materials Certifications

### TK Hide

#### PROPRIETIES AND ADVANTAGES

The hide is a hygienic and very practical product: it resists to wear, it's impermeable to water but, at the same time, the hide wicks air and sweat. The hide is obtained from the skin of bovines breeds and slaughtered for food purposes and subsequently treated with chromium salts.

#### CLEANING INSTRUCTIONS

Use only a damp, non abrasive cloth; do not use products containing solvents or alcohol that may damagethe surface. It is advisable to test an invisible area of the product before cleaning it all. For good preservation of the product purchased, it is unadvisable to expose it to direct sunlight that may alter its features and colours. Any surface imperfections are natural features of hide and guarantee that it is an original product.