

Trampoliere H73 Bistro Table

design Roberto Paoli, 2013

Table with 3-pointed base in lacquered or chromed steel. The version with lacquered structure can be used outdoors.

Maximum tray size 80x80 cm (31.5x31.5 in) or ø90 cm (35.4 in).



Colors and Materials

Structure



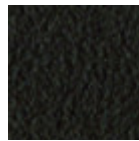
Chrome



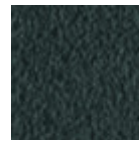
White steel



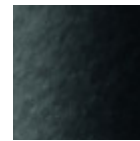
Sand steel



Brown steel



Grafite steel



Black steel



Facepowder pink steel



Fango steel



Bronze Steel



Pastel yellow steel



Ocher steel



Red steel



Sage green steel

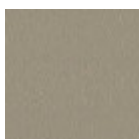


Light blue steel

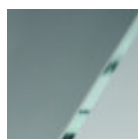


Ocean blue steel

Coating



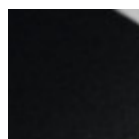
Melamine
8 Colors



Transparent glass



Extra clear glossy white glass



Black hpl



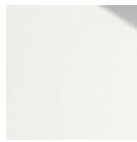
White hpl black core



Hpl cemento

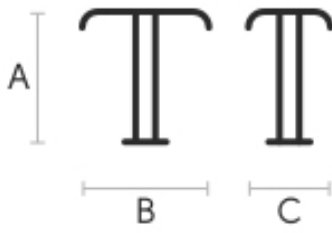


Hpl corten



White hpl white core

Dimensions



A	B	C
(cm)	(cm)	(cm)
(inch)	(inch)	(inch)

Trampoliere			
H73 (cm)	73	50	50
(inch)	28.7	19.7	19.7

Volumetric Details

Weight 10.5 Kg

Volume 0.23 mc

Package 2



Trampoliere H107 Bistro Table

design Roberto Paoli, 2013

Table with 3-pointed base in lacquered or chromed steel. The lacquered version can be used outdoors.

Maximum tray size 80x80 cm (31.5x31.5 in) or ø90 cm (35.4 in).

Colors and Materials

Structure



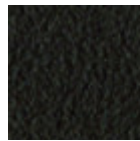
Chrome



White steel



Sand steel



Brown steel



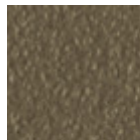
Grafite steel



Black steel



Facepowder pink steel



Fango steel



Bronze Steel



Pastel yellow steel



Ocher steel



Red steel



Sage green steel

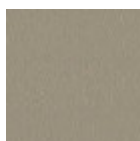


Light blue steel



Ocean blue steel

Coating



Melamine
8 Colors



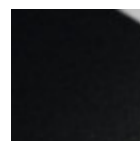
Transparent glass



Extra clear glossy white glass



White hpl black core



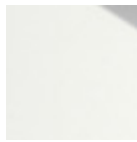
Black hpl



Hpl cemento

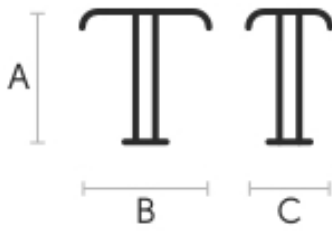


Hpl corten



White hpl white core

Dimensions



A	B	C
(cm)	(cm)	(cm)
(inch)	(inch)	(inch)

Trampoliere			
(cm)	107	50	50
(inch)	42.1	19.7	19.7

Volumetric Details

Weight 11.5 Kg

Volume 0.27 mc

Package 2