



Square 3G H73 Bistro Table

design Balutto Associati, 2018

Bistrot base with three-ways base in steel suitable for outdoor use.
Available flipping mechanism with surcharge.

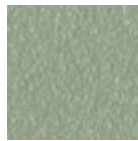
Suitable for round tops: ø60, ø70, ø80.

Colors and Materials

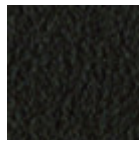
Structure



White steel



Sand steel



Brown steel



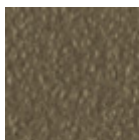
Grafite steel



Black steel



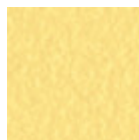
Facepowder pink steel



Fango steel



Bronze Steel



Pastel yellow steel



Ocher steel



Red steel



Sage green steel

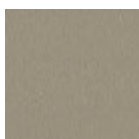


Light blue steel



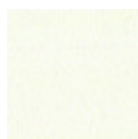
Ocean blue steel

Coating



Melamine

8 Colors



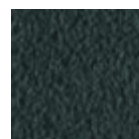
White steel



Sand steel



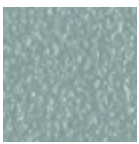
Pastel yellow steel



Grafite steel



Black steel



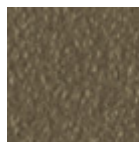
Light blue steel



Ocean blue steel



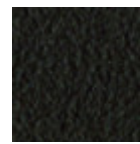
Bronze Steel



Fango steel



Light grey steel



Brown steel



Ocher steel



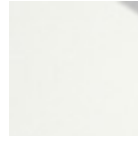
Facepowder pink steel



Red steel



Sage green steel



White hpl black core



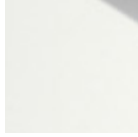
Black hpl



Hpl cemento

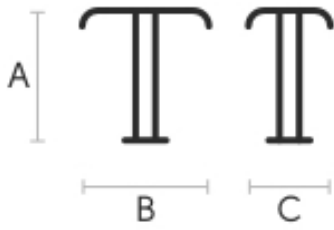


Hpl corten



White hpl white core

Dimensions



A (cm)	B (cm)	C (cm)
(inch)	(inch)	(inch)

Square 3G

H73 (cm)

(inch)

73

28.7

64

25.2

55

21.7

Volumetric Details

Weight 5 Kg

Volume 0.28 mc

Package 1



Square 3G H107 Bistro Table

design Balutto Associati, 2018

Bistrot base with three-ways base in steel suitable for outdoor use.
Available flipping mechanism with surcharge.

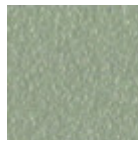
Suitable for round tops: $\varnothing 60$, $\varnothing 70$, $\varnothing 80$.

Colors and Materials

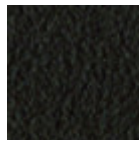
Structure



White steel



Sand steel



Brown steel



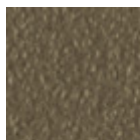
Grafite steel



Black steel



Facepowder pink steel



Fango steel



Bronze Steel



Pastel yellow steel



Ocher steel



Red steel



Sage green steel

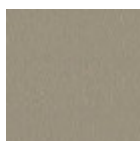


Light blue steel



Ocean blue steel

Coating

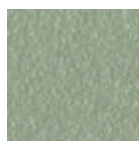


Melamine

8 Colors



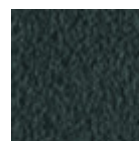
White steel



Sand steel



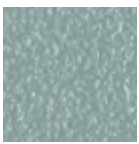
Pastel yellow steel



Grafite steel



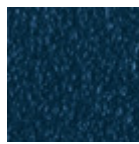
Black steel



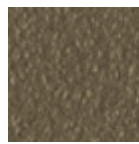
Light blue steel



Bronze Steel



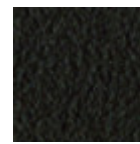
Ocean blue steel



Fango steel



Light grey steel



Brown steel



Ocher steel



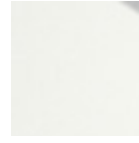
Facepowder pink steel



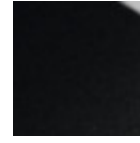
Red steel



Sage green steel



White hpl black core



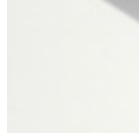
Black hpl



Hpl cemento

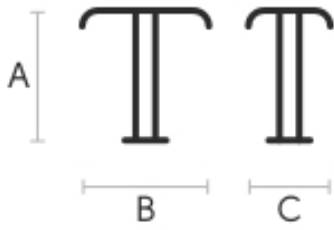


Hpl corten



White hpl white core

Dimensions



A (cm)	B (cm)	C (cm)
(inch)	(inch)	(inch)

Square 3G

H107 (cm)

(inch)

107

42.1

64

25.2

55

21.7

Volumetric Details

Weight 6 Kg

Volume 0.39 mc

Package 1



Square 4G H107 Bistro Table

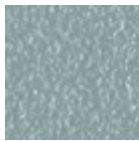
design Balutto Associati, 2018

Bistrot base with four-ways steel base suitable for outdoor use.

Suitable for round and square tops: $\varnothing 60$, $\varnothing 70$, $\varnothing 80$, 60x60, 70x70, 75x75, 80x80.

Colors and Materials

Structure



Light blue steel



White steel



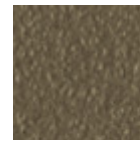
Ocean blue steel



Bronze Steel



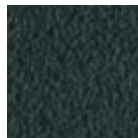
Sand steel



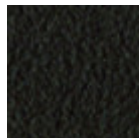
Fango steel



Pastel yellow steel



Grafite steel



Brown steel



Black steel



Ocher steel



Facepowder pink steel

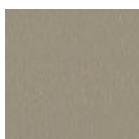


Red steel

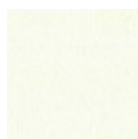


Sage green steel

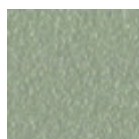
Coating



Melamine



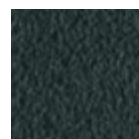
White steel



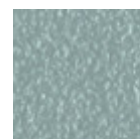
Sand steel



Pastel yellow steel



Grafite steel



Light blue steel

8 Colors



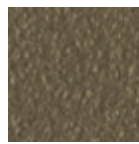
Black steel



Ocean blue steel



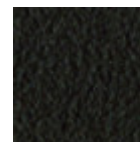
Bronze Steel



Fango steel



Light grey steel



Brown steel



Ocher steel



Facepowder pink steel



Red steel



Sage green steel



White hpl black core



Black hpl



Hpl cemento

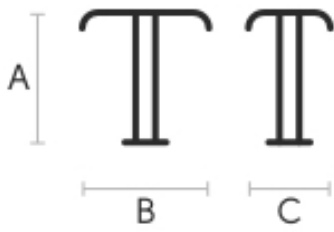


Hpl corten



White hpl white core

Dimensions



	cm	inch
A	107	42.1
B	55	21.7
C	55	21.7

Volumetric Details

Weight 7 Kg

Volume 0.34 mc

Package 1