



Liù H107 Bistro Table

design Archirivolto, 2013

Liù bistrò base with four-leg base in wood and steel insert.

Suitable for round and square tops with dimensions $\varnothing 60$ cm, $\varnothing 70$ cm; 60x60 cm, 70x70 cm ($\varnothing 23.6$, $\varnothing 27.6$ in; 23.6x23.6, 27.6x27.6 in).

Colors and Materials

Structure



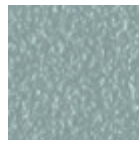
Lacquered ash
9 Colors



White steel



Black steel



Light blue steel



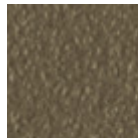
Ocean blue steel



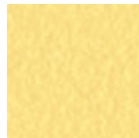
Bronze Steel



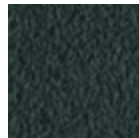
Sand steel



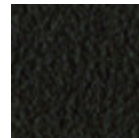
Fango steel



Pastel yellow steel



Grafite steel



Brown steel



Ocher steel



Facepowder pink
steel



Red steel

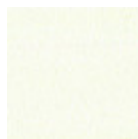


Sage green steel

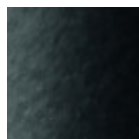
Coating



Melamine
8 Colors



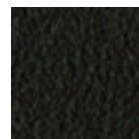
White steel



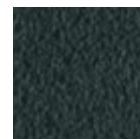
Black steel



Sand steel



Brown steel



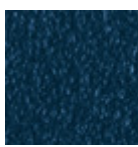
Grafite steel



Pastel yellow steel



Light blue steel



Ocean blue steel



Bronze Steel



Fango steel



Light grey steel



Ocher steel



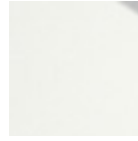
Facepowder pink steel



Red steel



Sage green steel



White hpl black core



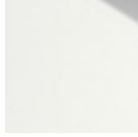
Black hpl



Hpl cemento

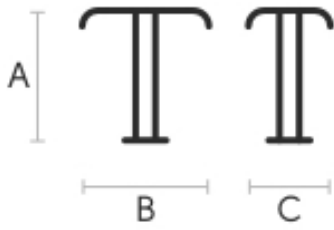


Hpl corten



White hpl white core

Dimensions



Volumetric Details

Weight 6 Kg

Volume 0.29 mc

Package 1

	A (cm)	B (cm)	C (cm)
	(inch)	(inch)	(inch)
Lìu H107	107	46	46
(cm)	42.1	18.1	18.1
(inch)			



Liù H73 Bistro Table

design Archirivolto, 2013

Liù bistrò base with four-leg base in wood and steel insert.

Suitable for round and square tops with dimensions $\varnothing 60$ cm, $\varnothing 70$ cm, $\varnothing 80$ cm; 60x60 cm, 70x70 cm, 80x80 cm ($\varnothing 23.6$, $\varnothing 27.6$, $\varnothing 31.5$ in; 23.6x23.6, 27.6x27.6, 31.5x31.5 in).

Colors and Materials

Structure



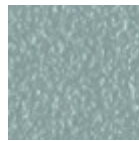
Lacquered ash
9 Colors



White steel



Black steel



Light blue steel



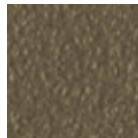
Ocean blue steel



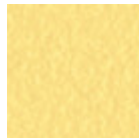
Bronze Steel



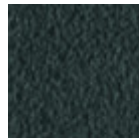
Sand steel



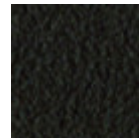
Fango steel



Pastel yellow steel



Grafite steel



Brown steel



Ocher steel



Facepowder pink
steel



Red steel

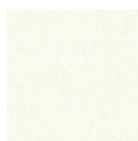


Sage green steel

Coating



Melamine
8 Colors



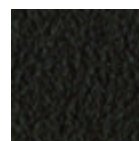
White steel



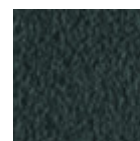
Black steel



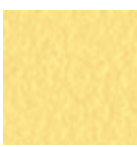
Sand steel



Brown steel



Grafite steel



Pastel yellow steel



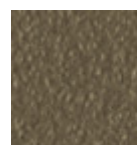
Light blue steel



Ocean blue steel



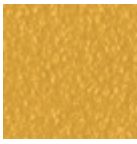
Bronze Steel



Fango steel



Light grey steel



Ocher steel



Facepowder pink steel



Red steel



Sage green steel



White hpl black core



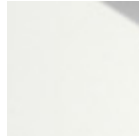
Black hpl



Hpl cemento

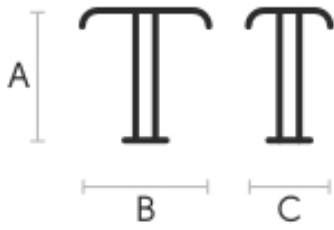


Hpl corten



White hpl white core

Dimensions



Volumetric Details

Weight 6 Kg

Volume 0.21 mc

Package 1

	A (cm)	B (cm)	C (cm)
	(inch)	(inch)	(inch)
Liù H73 (cm)	73	46	46
(inch)	28.7	18.1	18.1