



## Break 3 Bistro Table

Break/3 bistro base available in chrome or painted steel.

Suitable only for round tops: ø60, ø70.

### Colors and Materials

#### Structure



White steel



Black steel



Sand steel



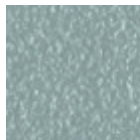
Brown steel



Grafite steel



Pastel yellow steel



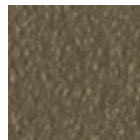
Light blue steel



Ocean blue steel



Bronze Steel



Fango steel



Light grey steel



Ocher steel



Facepowder pink steel

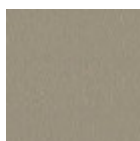


Red steel

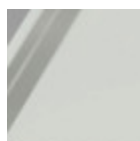


Sage green steel

#### Coating



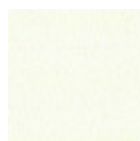
Melamine  
8 Colors



Extraclear glossy white glass



Transparent glass



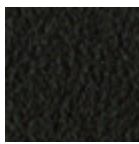
White steel



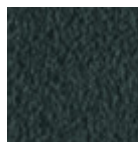
Black steel



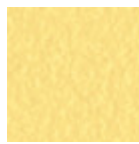
Sand steel



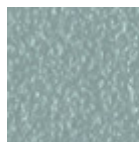
Brown steel



Grafite steel



Pastel yellow steel



Light blue steel



Ocean blue steel



Bronze Steel



Fango steel



Light grey steel



Ocher steel



Facepowder pink steel



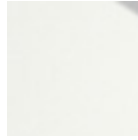
Red steel



Sage green steel



Satin



White hpl black core



Black hpl



Hpl cemento

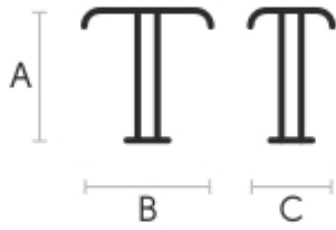


Hpl corten



White hpl white core

## Dimensions



## Volumetric Details

Weight 6 Kg

Volume 0.20 mc

Package 2

	A (cm)	B (cm)	C (cm)
	(inch)	(inch)	(inch)
<b>Break / 3</b>	73	45	45
<b>(cm)</b>	28.7	17.7	17.7
(inch)			



## Break 4 Bistro Table

Break/4 bistro base available in chrome or lacquered steel.

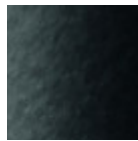
Suitable for round and square top: ø60, ø70, ø80, 60x60, 70x70.

### Colors and Materials

#### Structure



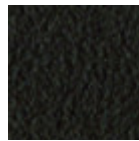
White steel



Black steel



Sand steel



Brown steel



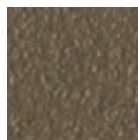
Grafite steel



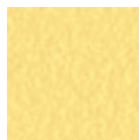
Facepowder pink steel



Bronze Steel



Fango steel



Pastel yellow steel



Ocher steel



Red steel



Sage green steel



Light blue steel



Ocean blue steel

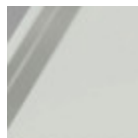


Chrome

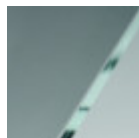
#### Coating



Melamine  
8 Colors



Extraclear glossy  
white glass



Transparent glass



White steel



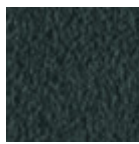
Black steel



Sand steel



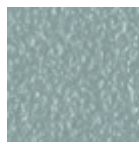
Brown steel



Grafite steel



Pastel yellow steel



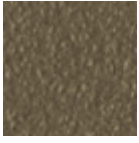
Light blue steel



Ocean blue steel



Bronze Steel



Fango steel



Light grey steel



Ocher steel



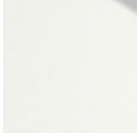
Facepowder pink steel



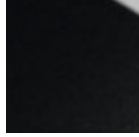
Red steel



Sage green steel



White hpl black core



Black hpl



Hpl cemento

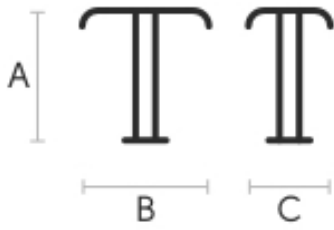


Hpl corten



White hpl white core

## Dimensions



## Volumetric Details

Weight 6.5 Kg

Volume 0.20 mc

Package 2

	A (cm)	B (cm)	C (cm)
	(inch)	(inch)	(inch)
<b>Break / 4</b>	73	45	45
<b>(cm)</b>	28.7	17.7	17.7
(inch)			