



CARATTERISTICHE STANDARD

- Struttura in legno rivestita in pelle.
- Ripiano in vetro disponibile in: fumè o bianco (RAL 9003).
- Ripiano in ceramica disponibile in: colore Terra, Antracite, Noir Desir o Ossido Bruno.
- Cucitura CUC 507.

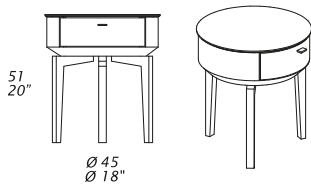
STANDARD FEATURES

- Hard wood frame covered in leather.
- Glass top available in: smoked or white (RAL 9003).
- Ceramic top available in: Terra, Antracite, Noir Desir or Ossido Bruno color.
- Stitching CUC 507.

K09 NIGHT STANDS

Scheda tecnica – Technical sheet

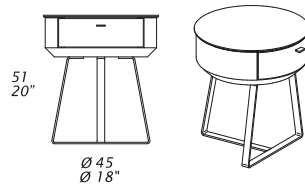
K009-A Wood Legs



noce canaletto frassino

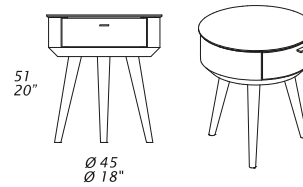


K009-B Metal Base



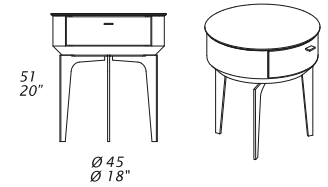
dark chrome-titanio, chrome,
burnished aluminium, burnished copper
or painted base.

K009-C Cone Legs



dark chrome-titanio, chrome,
burnished aluminium, burnished copper
or painted legs.

K009-D Metal Legs



dark chrome-titanio, chrome,
burnished aluminium, burnished copper
or painted legs.

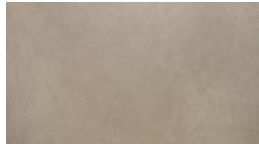
NOTE

- Dimensioni: la prima cifra indica i centimetri, la seconda cifra indica i pollici.
- Disponibile solo con cucitura standard.
- Ripiano in marmo disponibile in: Emperador Dark, Palissandro Blu Nuvolato, Palissandro Fiorito o Sahara Noir.

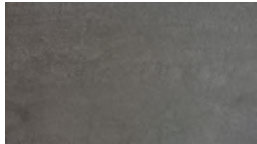
NOTES

- Dimensions: the first figure shows sizes in centimeters, the second in inches.
- Available only standard stitching.
- Marble top available in: Emperador Dark, Palissandro Blu Nuvolato, Palissandro Fiorito or Sahara Noir.

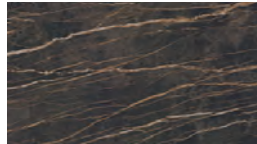
FINITURE RIPIANO IN CERAMICA - CERAMIC TOP FINISH



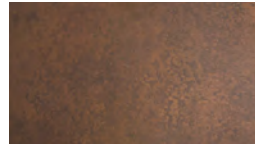
Terra color



Antracite color



Noir Desir color



Ossido Bruno color

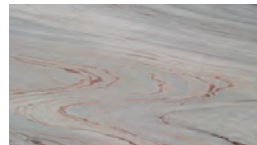
FINITURE RIPIANO IN MARMO - MARBLE TOP FINISHES



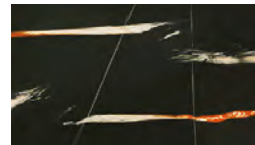
Emperador Dark



Palissandro Blu Nuvolato



Palissandro Fiorito



Sahara Noir

N.B. EACH MARBLE, BEING A NATURAL PRODUCT, IS A ONE-OF-A-KIND PIECE AND CAN THEREFORE EXHIBIT COLOUR AND STRUCTURAL DIFFERENCES.